

WiFi to RF Converter



Model No.: WiFi-Relay

APP control/1-16 Zone/1-5 color/Scene memory/USB powered

The WiFi-Relay controller converts Wi-Fi signal to RF signal, also known as Wi-Fi gateway or Wi-Fi hub.

It is compatible with multiple types of Skydance receivers. With WiFi-relay, you can control single color, dual color, RGB, RGBW, and RGB+CCT LED lights with a smart phone.

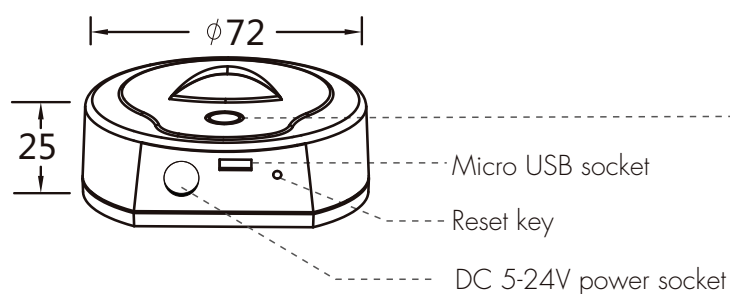
Features

- Can mix load all Skydance RF 2.4G Wireless Series products, including LED controllers, LED dimmable drivers, LED lights, 0-10V and Triac dimmers.
- Can control dimming, color temperature, RGB, RGBW and RGB+CCT light effects.
- Can be set on 1-16 zones, and 8 scene memories.
- Includes one micro USB cable.
- Available on Android and IOS software (App Name: SkySmart)

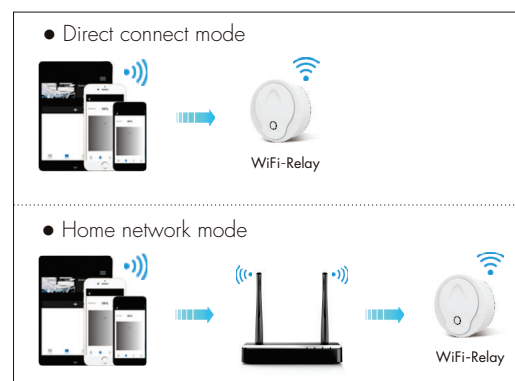
Technical Parameters

- Operating Voltage & Current: DC5-24V,300mA
- Wireless standard: 802.11 b/g/n
- Frequency range: 2.412GHz~2.484GHz
- Remote Distance: 30m
- Working Temperature: -30°C~55°C
- Product Size: $\Phi 72 \times 25$ mm

Interface Specifications



Network Connection



LED indicator

- White: WiFi-Relay initializing status.
- Yellow: running direct connect mode.
- Blue: running home network mode.
- Red: restore factory settings status.
- Blink: receiving signal status.

Software Installation

1. Download the application from Apple Store or Google Play by searching "SkySmart".
2. If the WiFi-Relay controller is connected to your home router, then connect your smart phone to your home network. If the WiFi-Relay controller cannot connect with your home router, then connect your smart phone to the WiFi-Relay controller network directly.
3. Open the SkySmart application and operate according to the following instructions.



WiFi-Relay Initializing the Connection

Direct connect mode:

Directly connect your smart phone to WiFi-Relay controller. When the signal is not available on your home network, you can directly connect to the WiFi-Relay controller:

- 1) Power on the WiFi-Relay controller, the controller LED indicator will turn on white color. After about 5s, the controller LED indicator will change yellow color and hold on, it is running direct connect mode.
- 2) Enter mobile device's WiFi settings, search and connect WiFi controller SSID.
WiFi controller SSID: SkySmart_XXXX, XXXX is WiFi-Relay controller's MAC address.
- 3) Open the SkySmart application and start using the Skysmart App.

Home network mode:

Connect the WiFi-Relay controller to your home network (recommend for daily use).

- 1) Power on the WiFi-Relay controller, the controller LED indicator will turn on white color. After about 5s, the controller LED indicator will change yellow color and hold on.
- 2) Enter mobile device's Wi-Fi settings, search and connect WiFi controller SSID.
WiFi controller SSID: SkySmart_XXXX, XXXX is WiFi-Relay controller's MAC address.
- 3) Open the SkySmart application and choose "Settings" (Image 1). Choose "Connect home internet network". Press "OK". It will automatically search all the wifi router's SSID around.
- 4) Choose the router you want to connect, enter the password and then press "OK"(Image 2). When the controller attempts to connect with the router, the LED will be change blue color and hold on.
- 5) Setting up the connection router is completed and start using the Skysmart App

Restore factory settings operation:

- 1) Power on the WiFi-Relay controller, the controller LED indicator will turn on white color. After about 5s, the controller LED will change color (yellow or blue) and hold on.
- 2) Press and hold the WiFi-Relay controller's reset key (operating time about 8s) and release the key until the LED change red color.
- 3) Restore factory settings is completed.

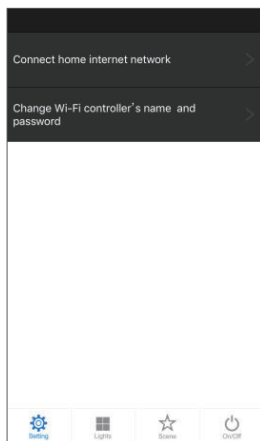


Image 1

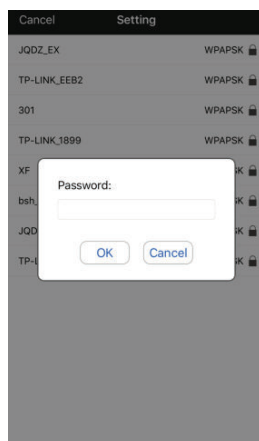


Image 2

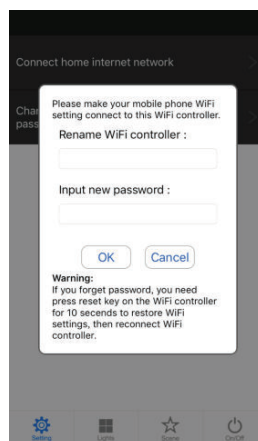


Image 3

- Note:**
- If the router was changed or lost, and the "Skysmartlight" network cannot be found in the network list, you can restore factory settings, then repeat all the connection steps from the beginning.
 - WiFi Controller's name and password can be edited only under the direct connection mode. Choose "Settings", then Choose "Change WiFi-Relay controller's name and password", enter new name and/or password (password must be 8-20 characters), and press "OK" (Image 3).
 - If you forget your password with direct connect mode, restore factory settings.
 - If Skysmart App can not connect the WiFi-Relay controller with local network mode, you may have entered wrong password, it only do restore the factory settings operation.
 - A LAN can only connect one WiFi-Relay controller.

Add, Edit or Delete Light Zone and Match Receivers

Enter Skysmart App,

- 1) Choose "Lights", then click below "+" or "-" key to add new light zone or delete light zone. (Image 4)
- 2) Click right-top "☰" to edit all light zones. (Image 5)
- 3) Click light zone name to edit light zone name.
- 4) Click "🖼️" or "📷" icon to change light zone picture.
- 5) Click light type icon to change light type, there are 6 kind light types you can select:
Dimmer, Color temperature, RGB, RGBW, RGB+CCT or ON/OFF switch. After light type is changed, press match key or restart power on your LED controller, then click blue "Match" key. (Image 6)

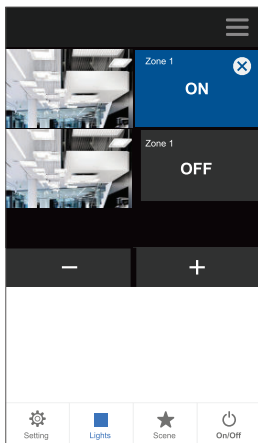


Image 4

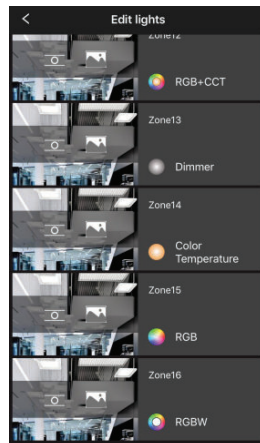


Image 5

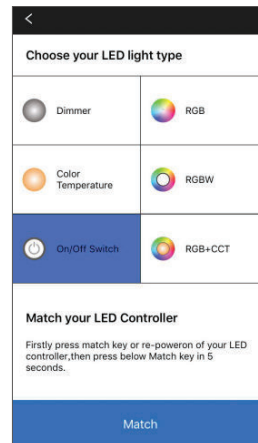


Image 6

- 6) The second way to match light zone with receivers:

choose "Lights",

press match key on your LED controller, then click ON/OFF of corresponding light zone on App, the match is done once the LED indicator flashes several times fastly.

or restart power of your LED controller, then click ON/OFF key three times fastly,

The light blinks 3 times means match is successful.

- 7) Delete match :

Switch off the power of the receiver, then switch on power again,

immediately click light zone's ON/OFF key 5 times.

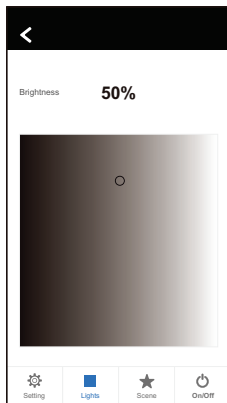
The lights blinks 5 times means match is deleted.

you also can press and hold match key of the receiver for 5s to delete match.

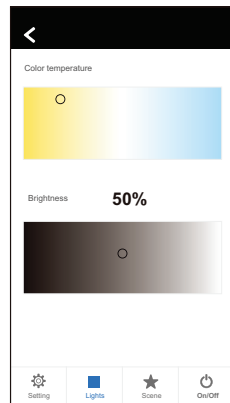
Light Operations

Enter lights interface,

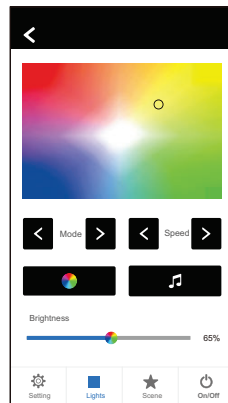
- 1) Click right ON/OFF key to turn on or turn off each zone light,
- 2) Click bottom-right On/Off key to turn on or turn off all zone lights,
- 3) Click left picture to enter each zone's light interface.(Image 7-11)



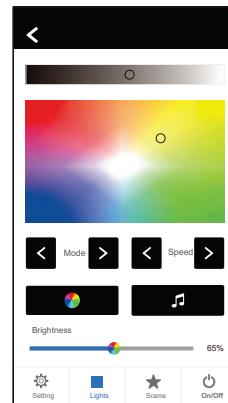
Dimming
Image 7



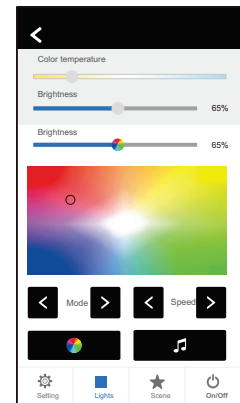
Color temperature
Image 8



RGB
Image 9



RGBW
Image 10



RGB+CCT
Image 11

Scene Operations

1. Save: 1) Enter lights interface, change each light zone's color or ON/OFF state.
2) Enter scene interface, long press any of 8 digital key, save the current light effect into 1-8. (Image 13)
2. Recall: Enter scene interface, short press any of 8 digital key, recall saved light effect. (Image 12)

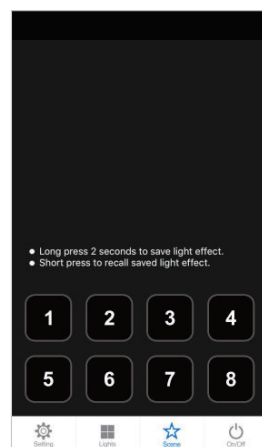


Image 12

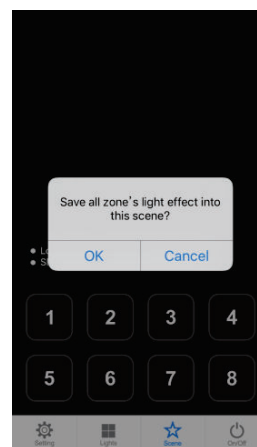


Image 13