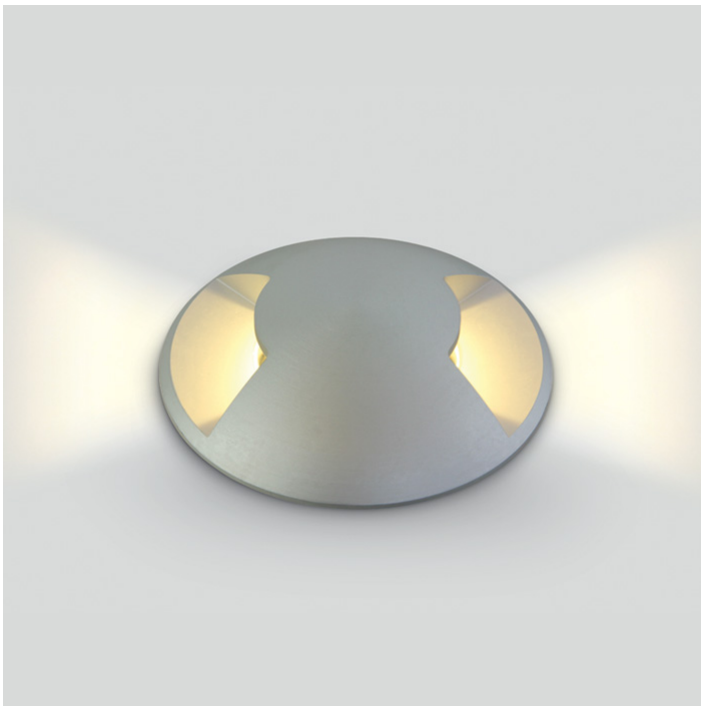


19 Wall Recessed & Inground>The Inground Medium Series GU10

69016G



Inground MR16 fitting with GU10 lampholder, IK10, IP67.

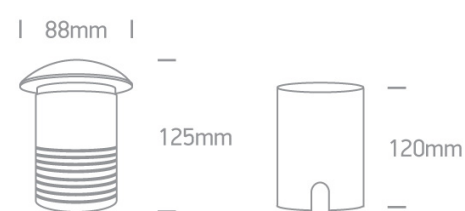
Complies with standard EN60598-1 and any other specific standards.



Downloads



Dimensions



Gallery



Physical Specification



Item Group	19 Wall Recessed & Inground
Family	The Inground Medium Series GU10
Order Code	69016G
Colour	Aluminium
Material	Aluminium
Shape	Circular
Height	125mm

Diameter	88mm
Cutout Hole Diameter	80mm
Inground	Yes
Depth Required	130mm+300mm drainage
Indoor	Yes
Outdoor	Yes
IK Rating	10

Electrical Characteristics

Gear	No
------	----

Fitting + Driver

Input Voltage	100-240V
50 Hz	Yes
60 Hz	Yes
Safety Class	
Power(Watts)	10W
IP Rating	IP67
Light Source	Replaceable lamp
Lamp Holder	GU10
Number of Lamps	1
Dimmable	N/A
Cable Length	200cm
F Mark	

Illumination Data

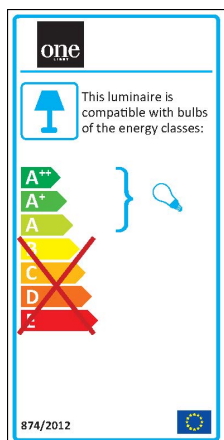
Illumination Diagram	
----------------------	---

Packing Info

Box Length	18,5cm
------------	--------

Box Width	12,5cm
Box Height	12,5cm
Pcs/Carton	18
Barcode	5291889058106
HS Code	9405409900

Energy Label



Certification & Warranty

Warranty	2 Years
Weee Directive	Yes

switch to
one light!

one
LIGHT

