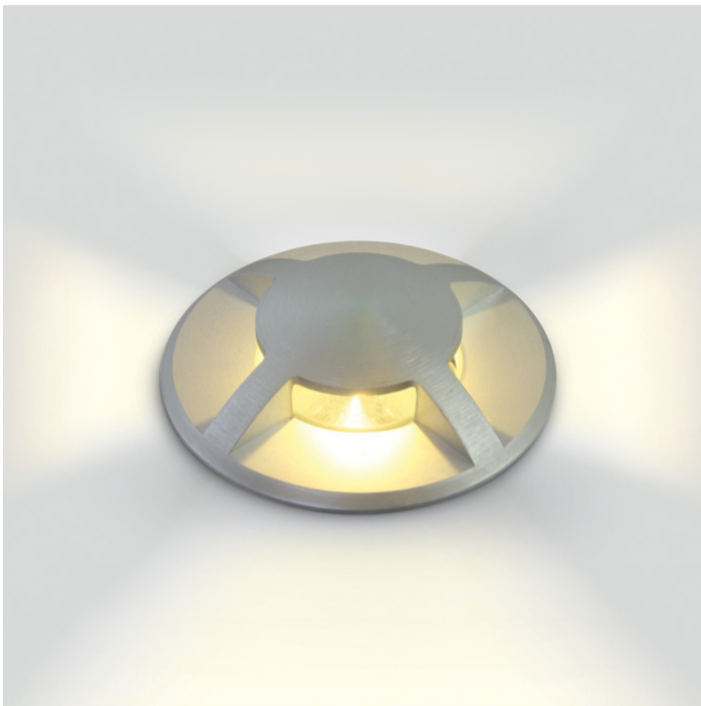


19 Wall Recessed & Inground>The Inground Medium Series 3W Aluminium

69016A/W



3W COB LED inground, aluminium, for path illumination., IK10, IP67.

Supplied with non-dimmable LED driver.

Complies with standard EN60598-1 and any other specific standards.



Downloads



Dimensions



Gallery





Physical Specification


Item Group	19 Wall Recessed & Inground
Family	The Inground Medium Series 3W Aluminium
Order Code	69016A/W
Colour	Aluminium
Material	Aluminium
Shape	Circular
Height	105mm

Diameter	88mm
Cutout Hole Diameter	77mm
Inground	Yes
Depth Required	105mm+300mm drainage
Indoor	Yes
Outdoor	Yes
IK Rating	10


Electrical Characteristics

Gear	Built In
Fitting + Driver	
Input Voltage	100-240V
50 Hz	Yes
60 Hz	Yes
Safety Class	
Power(Watts)	3W
IP Rating	IP67
Light Source	LED built in
Dimmable	No
Cable Length	200cm
F Mark	

Fitting	
Input Type	Constant Current
Input Current	350mA
Voltage	8V
Power(Watts)	2,8W
IP Rating	IP67
Light Source	LED built in
LED Type	SMD 1208

LED Brand	Edison
Gear	
Gear Type	Led Driver
Input Voltage	100-240V
50 Hz	Yes
60 Hz	Yes
Power(Watts)	1-4W
Power Factor	0,5
Constant Current	Yes
350mA	3-11V
IP Rating	IP20
Safety Class	
Dimmable	No
Housing Material	Plastic
Brand	Gallop

Illumination Data

Colour Temperature	3000K
Lumen Output	150lm
Light Efficiency	50lm/W
CRI	80
Illumination Diagram	

Packing Info

Box Length	18,5cm
Box Width	12,5cm
Box Height	12,5cm
Box Weight	0,770Kg
Pcs/Carton	18

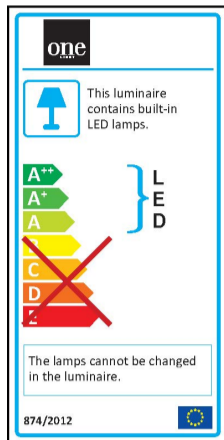
Barcode

5291889030188

HS Code

9405409900

Energy Label



Certification & Warranty

Warranty

2 Years

Weee Directive

Yes

switch to
one light!

one
LIGHT

