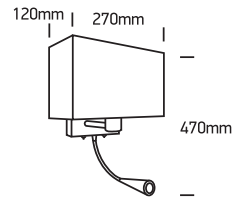


INSTALLATION MANUAL

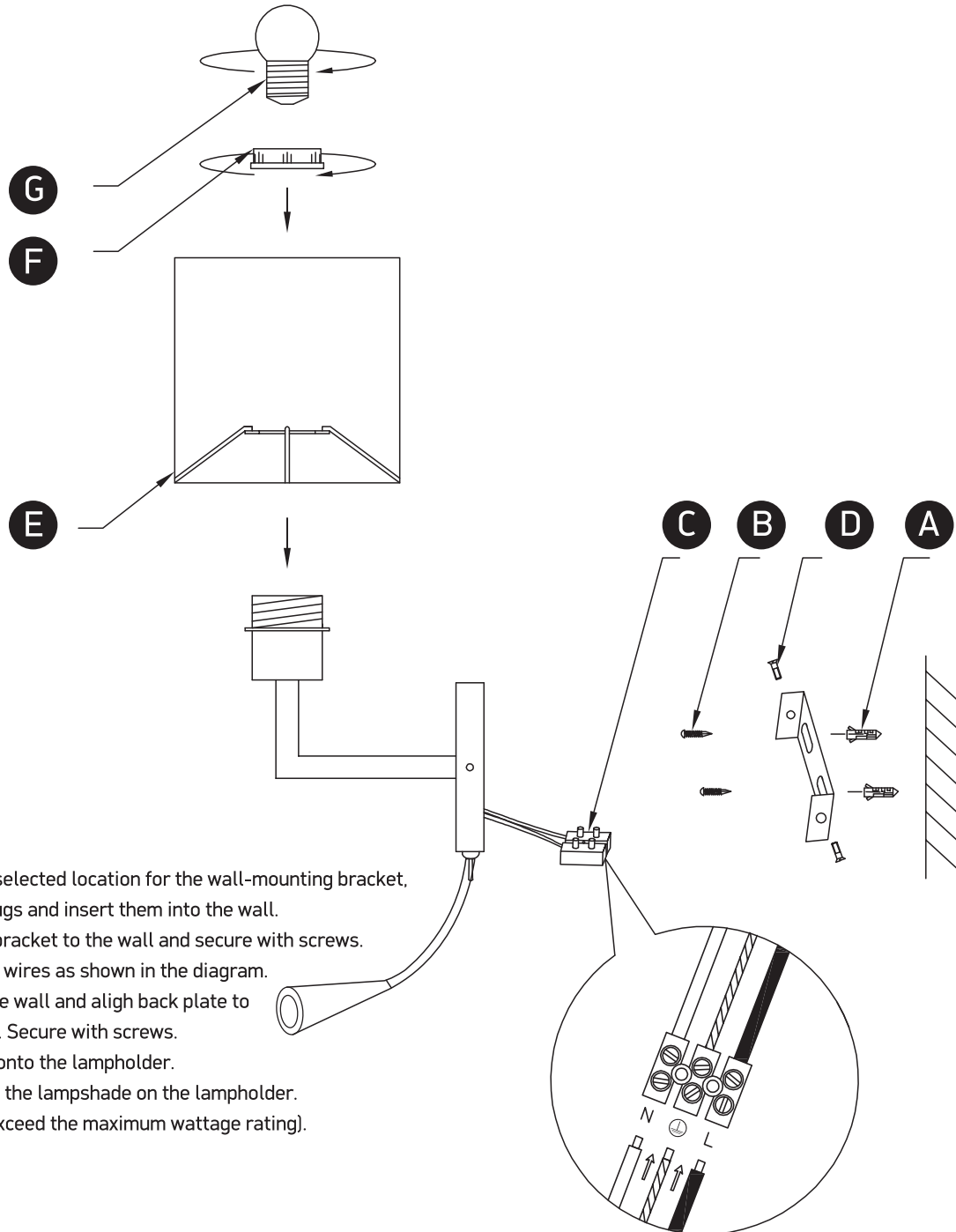
61074

ecolight



3W LED + 40W E27 | 100-240V | IP20 | Metal + white fabric shade | Adjustable

With 2 ON/OFF Switches.



Warnings:

1. Make sure that the product is installed properly before connecting to electricity.
2. Do not cover the fitting.
3. Maintenance and installation should only be carried out by a professional electrician.