

RF Smart AC Switch & Push Switch

Model No.: SS-C

RF AC Switch/Relay output/Max 3A/Push on/off/Wall junction box mounting

Features

- RF smart switch with relay output, without dimming function.
- To switch single color LED lamps, traditional incandescent and halogen lights.
- Compatibility with Skydance's 2.4G dimming remote control.
- Connect with external push switch optional.
- Easy to be placed in standard wall junction box behind a push switch.



CE RoHS LVD

Technical Parameters

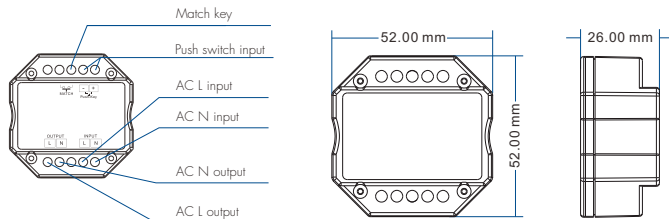
Input and Output	
Input voltage	AC100-240V
Output voltage	AC100-240V
Output current	Max 3A
Output power	300-720W
Input signal	RF 2.4GHz + Push switch
RF Control distance	30m

Environment	
Operation temperature	Ta: -30°C ~ +55°C
Case temperature (Max.)	Tc: +85°C
IP rating	IP20

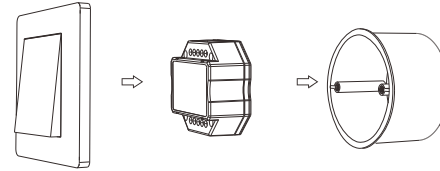
Safety and EMC	
EMC standard (EMC)	EN 55015:2013
	EN 61547:2009
	EN 61000-3-2:2014 EN 61000-3-3:2013
Safety standard(LVD)	EN 61347-2-11:2002
	EN 61347-1:2015
	EN 62493:2015
Certification	CE,EMC,LVD

Warranty	
Warranty	5 years

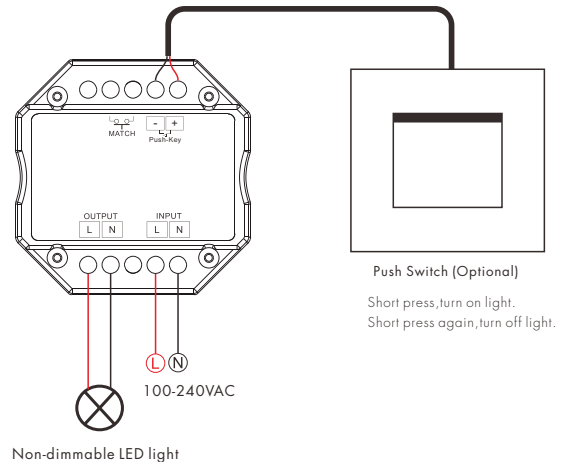
Mechanical Structures and Installations



Typical Wall Junction Box Mounting



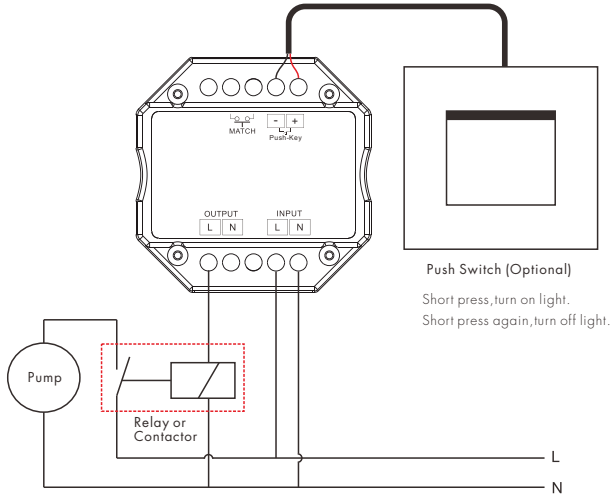
Wiring diagram



Note:

1. The upper Push-key input port can not connect any AC or DC power supply, otherwise, the product will be damaged.
2. If output connect with capacitive or inductive load, the maximum output current only up to 3A. If output connect with resistive load, the maximum output current may up to 10A.

3. An additional AC relay or contactor is needed when total input current of the load (such as pump) is higher than 3A or inrush current is greater than 30A.



Match Remote Control (two match ways)

End user can choose the suitable match/delete ways. Two options are offered for selection:

Use the controller's Match key

Match:

Short press match key, immediately press on/off key (single zone remote) or zone key (multiple zone remote) of the remote.

Delete:

Press and hold match key for 5s to delete all match, The light blinks 5 times means all matched remotes were deleted.

Use Power Restart

Match:

Switch off the power, then switch on power again, immediately short press on/off key (single zone remote) or zone key (multiple zone remote) 3 times on the remote.

Delete:

Switch off the power, then switch on power again, immediately short press on/off key (single zone remote) or zone key (multiple zone remote) 5 times on the remote.

Available RF remote



RU4
4 zone remote



RU8
8 zone remote



PF1-2
2 zone remote

Application notes

1. All the receivers in the same zone.



Auto-transmitting: One receiver can transmit the signals from the remote to another receiver within 30m, as long as there is a receiver within 30m, the remote control distance can be limitless.

Auto-synchronization: Multiple receivers within 30m distance can work synchronously when they are controlled by the same remote.

Receiver placement may offer up to 30m communication distance. Metals and other metal materials will reduce the range. Strong signal sources such as WiFi routers and microwave ovens will affect the range.

We recommend for indoor applications that receiver placements should be no further apart than 15m.

2. Each receiver (one or more) in a different zone, like zone 1, 2, 3 or 4.

