

Touch Wheel RF Remote Controller

Model No.: R21/R22/R23

23Key/Touch color wheel/Wireless remote 30m distance/AAAx2 battery/Magnet stuck fix



R21
1 Zone RGB/RGBW



R22
4 Zone RGB/RGBW



R23
1 Zone RGB+CCT

CE RoHS LVD RED

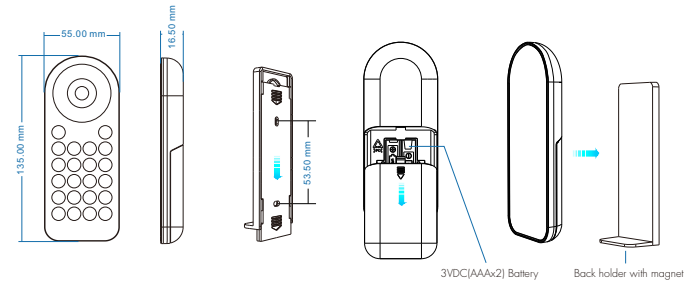
Features

- Apply to RGB, RGBW or RGB+CCT LED controller.
- Ultra sensitive color adjustment touch wheel.
- Each remote can match one or more receiver.
- AAAx2 battery powered.
- Operate with LED indicator light.
- Magnet on the back which can be easily stuck on back holder or any metal surfaces.

Technical Parameters

Input and Output		Safety and EMC	
Output signal	RF(2.4GHz)	EMC standard (EMC)	EN301 489, EN 62479
Working voltage	3VDC(AAAx2)	Safety standard(LVD)	EN60950
Working current	< 5mA	Radio Equipment(RED)	EN300 328
Standby current	< 10µA	Certification	CE, EMC, LVD, RED
Standby time	1 year		
Remote distance	30m(Barrier-free space)		
Warranty		Environment	
Warranty	5 years	Operation temperature	Ta: -30°C ~ +55°C
		Case temperature (Max.)	Tc: +85°C
		IP rating	IP20

Mechanical Structures and Installations



To fix the remote, three options are offered for selection:

- Option 1: stuck the remote on any metal surfaces directly.
- Option 2: fix the remote' back holder on the wall with two screws.
- Option 3: adhere the remote' back holder to the wall with pasteur.

Operation

- When light is on, touch the color wheel, the indicator will display red.
- To extend battery life, no touch or press key operation after a few seconds, the touch wheel will enter sleep state, you need press any key to make touch wheel quit sleep state.

Match Remote Control (two match ways)

End user can choose the suitable match/delete ways. Two options are offered for selection:

Use the controller's Match key

Match:
Short press match key, immediately press on/off key (single zone remote) or zone key (multiple zone remote) on the remote.
The LED indicator fast flash a few times means match is successful.

Delete:
Press and hold match key for 5s to delete all match,
The LED indicator fast flash a few times means all matched remotes were deleted.

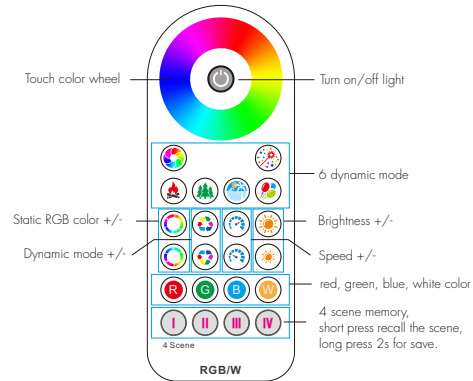
Use Power Restart

Match:
Switch off the power, then switch on power again, immediately short press on/off key (single zone remote) or zone key (multiple zone remote) 3 times on the remote.
The light blinks 3 times means match is successful.

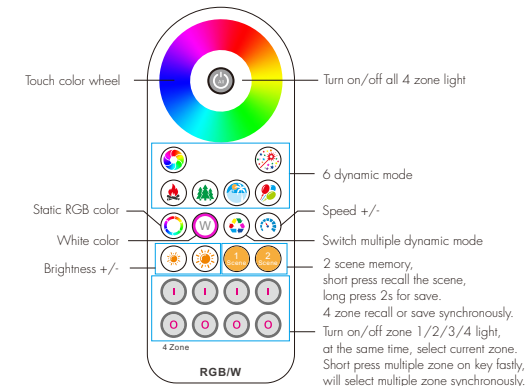
Delete:
Switch off the power, then switch on power again, immediately short press on/off key (single zone remote) or zone key (multiple zone remote) 5 times on the remote.
The light blinks 5 times means all matched remotes were deleted.

Key function

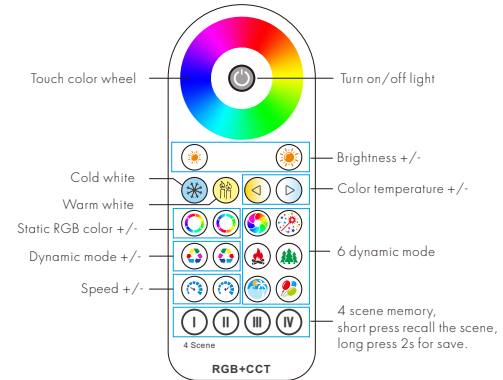
● R21 1 zone RGB/RGBW remote



● R22 4 zone RGB/RGBW remote



● R23 1 zone RGB+CCT remote



Safety information

1. Read all instructions carefully before you begin this installation.
2. When installing battery, pay attention to the battery positive and negative polarity.
A long time without the remote control, remove the battery.
When remote distance becomes smaller and insensitive, replace the battery.
3. If no response from the receiver, please re-match the remote.
4. Gently handle remote, beware of falling.
5. For indoor and dry location use only.