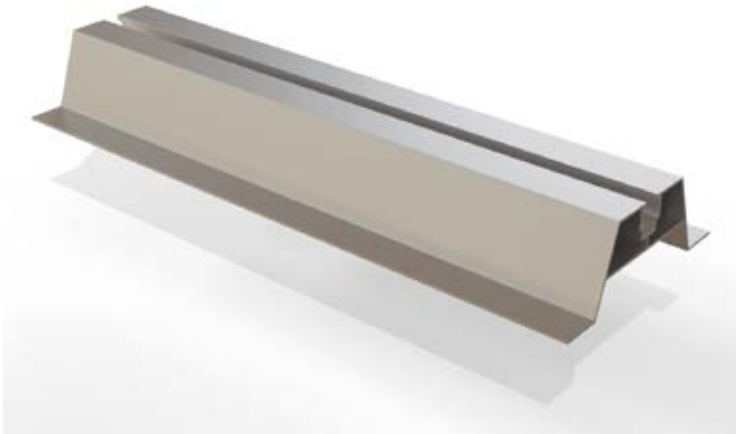
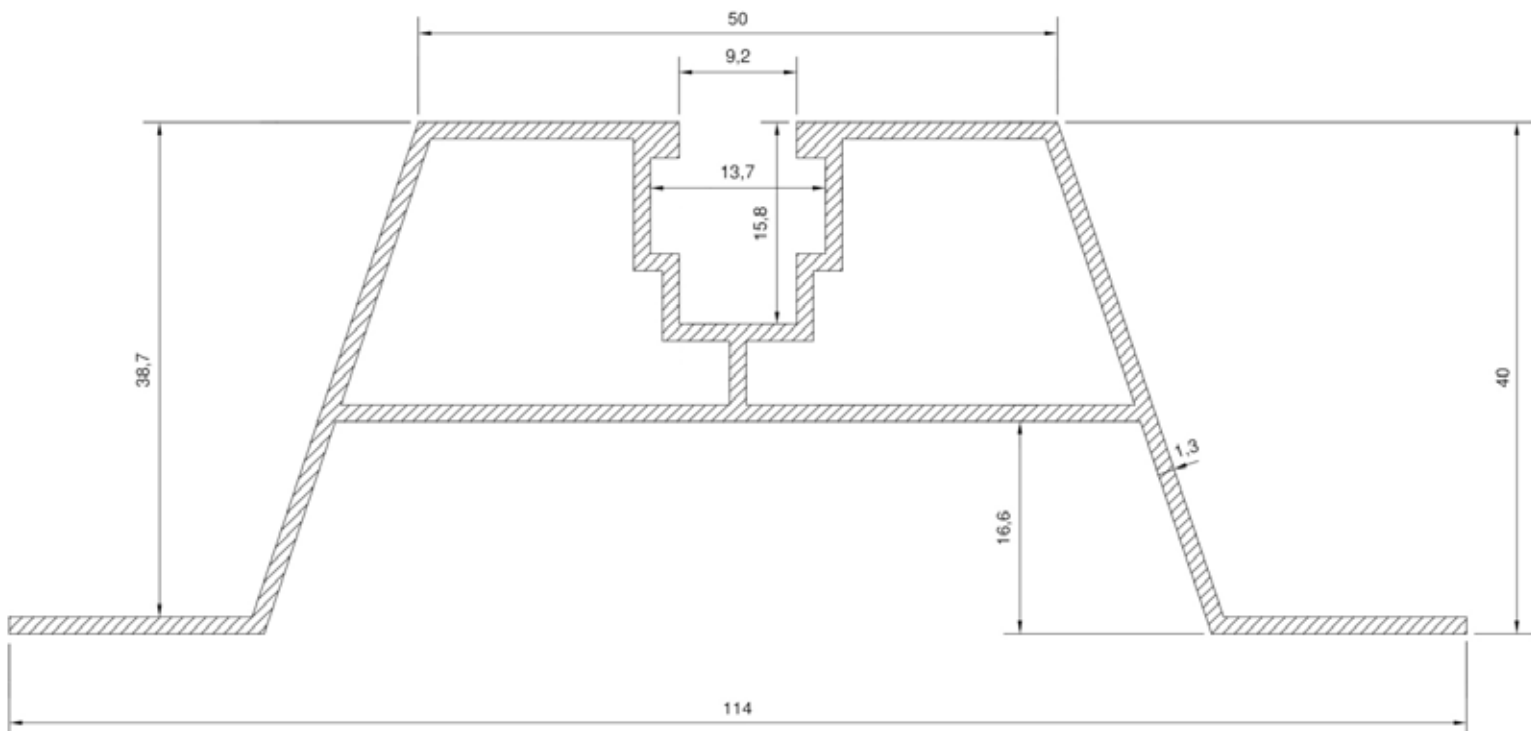


PRODUCT DESCRIPTION



Roof mounts are a compatible set of mounting components for photovoltaic panels. They are designed for tiled roofs.





TECHNICAL SPECIFICATIONS

Material: Aluminum 6060 T6

Height: 40 mm

Width: 114 mm

Length: 300 / 330 / 400 mm

Assembly method:

- upper channel - M8 DIN 912 allen bolt
M8 sliding inlet with ball
M8 DIN 557 square nut
- fastening - 6,0x25 Bi-metal self-drilling screw
5,5x25 EJ self-drilling screw

***Bridges are taped with EPDM.**

****The trapezoidal bridge is also available in a raw layer version.**

Given values are not actual installation conditions and require estimates.

Advantages:

- easy and quick assembly
- lasting joint
- high durability
- lightness of construction
- no drilling in profiles and panels
- esthetics and high quality of realization