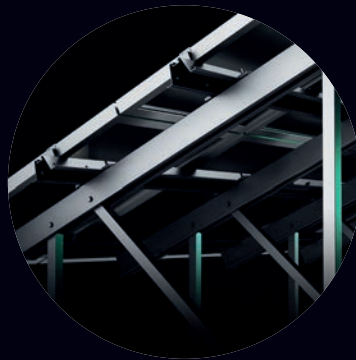
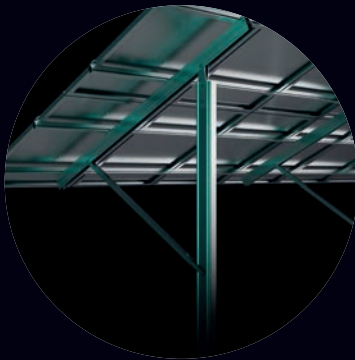
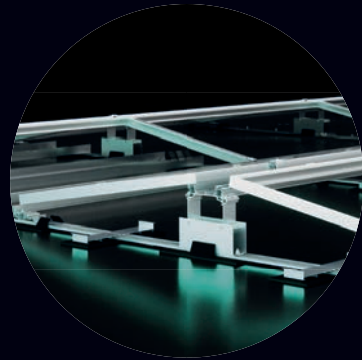
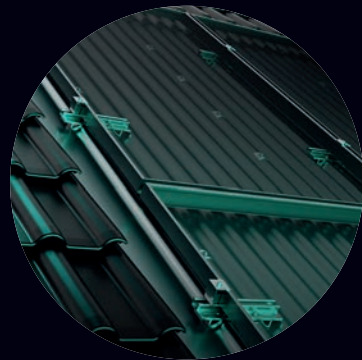
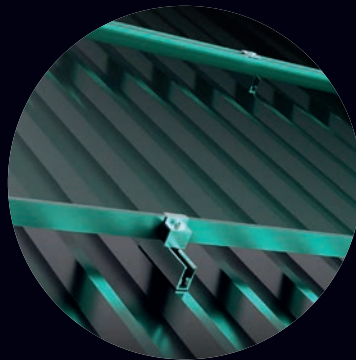
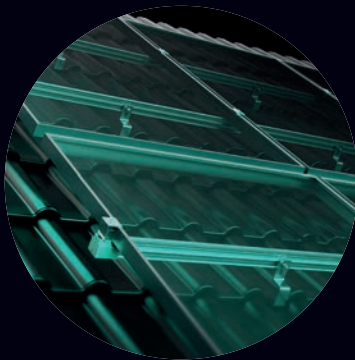




mounting
systems

Product Catalogue ProLine

Standard-Portfolio



Contents

Base Rail and Connector	3
Module Fastening	13
Roof Fasteners	19
FD3 Premium Line ^{NEW}	31
Elevations	39
In Roof	47
Open Terrain *	53
Solarcarports	61

In General:

For all business transactions, Mounting Systems GmbH's "General terms and conditions" are valid, as well as any items negotiated and confirmed for a specific transaction.

Through the publishing of this catalogue, all former catalogues become invalid. All information in this document may be subject to alterations.

Using our SolarPro-Tool, you can easily verify your static, create the bill of material and calculate the price.

For all systems is an extensive technical documentation available. We can provide technical data sheets and installation instructions in several languages. These can also be found on our website www.mounting-systems.com

For inquiries, which cannot be interpreted in SolarPro-Tool, please use our form "Technical Planning Aid" and send it to sales-de@mounting-systems.com. At the request of packaging, which are not included in this product catalog, please contact us.

Please note that the transport costs will rise for a rail length over 2.4 m.

SU = Selling unit

2023 © Mounting Systems GmbH

Base Rail & Connector

Base Rail

Connector

Cross Rail Connector

Trapezoidal Sheet



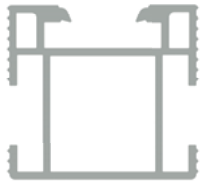
Connector-Technology

Without screws quickly mated connection with the same static values as the base rail. Thus there is no weak point and statically detectable line loads throughout the system will give you security.



1. Profile 4/35

Material: Aluminium (EN AW 6063 T66)



Base Rail 4/35

Pallet quantity: **126 Pieces**
 Dimension H x W: **35 x 37 mm**
 Weight: **0.81 kg/m**



Length	Colour	Article No.
600mm	silver	610-0705
2250mm	silver	610-0096
2400mm	silver	800-1344
3150mm	silver	800-0021
3300mm	silver	800-1384
4150mm	silver	800-0020
4400mm	silver	800-1405
5200mm	silver	800-1317
6000mm	silver	800-1055
110mm	black	610-0061
600mm	black	610-0713
1100mm	black	610-0081
1195mm	black	610-0097
1700mm	black	610-0055
6000mm	black	800-0992



Connector

Dimensions outer connector H x W x L: **34.2 x 32.3 x 160 mm**
 Weight outer connector: **0.15 kg**
 Dimensions inner connector H x W x L: **22.2 x 21.7 x 250 mm**
 Weight inner connector: **0.11 kg**

	Article No.	SU
Inner connector 4/35	602-0048	40
Outer connector 4/35	706-0055	20



1. Profile 4/35

End Caps



Material: **Polymer**
 Dimensions H x W x L: **37.4 x 34.2 x 10 mm**
 Weight: **0.003 kg**
 Article addition: **Usable on both system carrier ends**

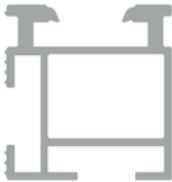
	Article No.	SU
End cap 4/35 grey	814-0425	50
End cap 4/35 black	814-0431	50



2. Profile 4/35 CCS

Material: Aluminium (EN AW 6063 T66)

Base Rail 4/35 CCS



Pallet quantity: **135 Pieces**
 Dimension H x W: **35 x 34 mm**
 Weight: **0.79 kg/m**



Length	Article No.
6000 mm	800-1414
6150 mm	800-1124

Connector Pre-assembled



Dimensions H x W x L: **16 x 23 x 100 mm**
 Weight: **0.058 kg**
 Article addition: **Incl. mounting material (2x M8 screw pre-assembled)**

	Article No.	SU
Connector CCS Pre-assembled	706-0032	10

3. Profile 5/41

Material: Aluminium (EN AW 6063 T66)



Base Rail 5/41

Pallet quantity: **171 Pieces**
 Dimension H x W: **41 x 32 mm**
 Weight: **0.63 kg/m**
 Article addition: **No upper T-head bolt connection possible**



Length	Colour	Article No.
2250 mm	silver	610-0119
2400 mm	silver	610-0075
3200 mm	silver	800-0107
3300 mm	silver	800-1409
4200 mm	silver	800-0106
4400 mm	silver	800-1408
5200 mm	silver	800-1318
6000 mm	silver	800-1407
6200 mm	silver	800-0105



Connector

Dimensions connector H x W x L: **31.1 x 21.7 x 250 mm**
 Weight: **0.198 kg**

	Article No.	SU
Connector 5/41	602-0204	40
Connector 5/41 with grounding	706-0205	40



End Cap 5/41

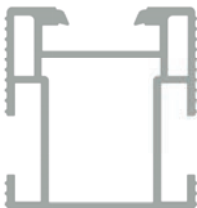
Material: **Polymer**
 Dimension H x W x L: **42.5 x 42.8 x 57 mm**
 Weight: **0.022 kg**
 Article addition: **Can be used on both system support ends**

	Article No.	SU
End cap 5/41 Grey	814-0681	50
End cap 5/41 Black	814-0682	50

4. Profile 6/40

Material: Aluminium (EN AW 6063 T66)

Base Rail 6/40



Pallet quantity: **130 Pieces**
 Dimension H x W: **40 x 37 mm**
 Weight: **0.89 kg/m**



Length	Colour	Article No.
2250 mm	silver	610-0120
2400 mm	silver	610-0070
3150 mm	silver	800-0019
3300 mm	silver	800-1412
4150 mm	silver	800-0017
4400 mm	silver	800-1411
5200 mm	silver	800-1319
6000 mm	silver	800-1057
110 mm	black	610-0071
600 mm	black	610-0714

Connector



Dimensions outer connector H x W x L: **39.2 x 32.3 x 160 mm**
 Weight outer connector: **0.16 kg**
 Dimensions inner connector H x W x L: **27.4 x 22.7 x 250 mm**
 Weight inner connector: **0.16 kg**

	Article No.	SU
Inner connector 6/40	602-0049	40
Outer connector 6/40	706-0056	20

End Caps



Material: **Polymer**
 Dimensions H x W x L: **39.2 x 37.4 x 10 mm**
 Weight: **0.003 kg**
 Article addition: **Usable on both system carrier ends**

	Article No.	SU
End cap 6/40 grey	814-0426	50
End cap 6/40 black	814-0432	50

5. Profile 10/48

Material: Aluminium (EN AW 6063 T66)



Base Rail 10/48

Pallet quantity: **98 Pieces**
 Dimension H x W: **48 x 37 mm**
 Weight: **0.97 kg/m**



Length	Article No.
6000 mm	800-1132
4150 mm	800-0025
4400 mm	800-1413
2400 mm	800-1341



Connector

Dimensions outer connector H x W x L: **48.0 x 37.3 x 160 mm**
 Weight outer connector: **0.18 kg**
 Dimensions inner connector H x W x L: **36.0 x 32.9 x 250 mm**
 Weight inner connector: **0.31 kg**

	Article No.	SU
Inner connector 10/48	602-0050	40
Outer connector 10/48	706-0057	20



End Caps

Material: **Polymer**
 Dimensions H x W x L: **48.0 x 37.4 x 10 mm**
 Weight: **0.004 kg**
 Article addition: **Usable on both system carrier ends**

	Article No.	SU
End cap 10/48 black	814-0433	50
End cap 10/48 grey	814-0427	50



6. Cross Rail Connector

Material: Aluminium (EN AW 6063 T66), Stainless steel



For the Cross Rail Installation

With the cross rail connector all base rails types can be freely combined.

Article addition: 5/41 rail not suitable as lower rail layer

	Article No.	SU
Cross rail connector	706-0061	20

7. Rails for Trapezoidal Sheet

Material: Aluminium (EN AW 6063 T66)



Rail 1/15 with EPDM

Landscape mounting directly to the top of the crown

Dimension H x W: **15.5 x 21.6 mm**
 Weight: **0.23 kg/m**

	Article No.	SU
1/15 CS; 100 mm; pre-ass.	712-0137	20

Pallet quantity: 280 Pieces	Article No.
6000 mm pre-ass. without holes	712-0175



Rail 1/16 with EPDM

Landscape mounting directly to the top of the crown

Dimension H x W: **15.5 x 22 mm**
 Weight: **0.244 kg/m**

	Article No.	SU
130 mm	712-0262	60



Rail 4/40 with EPDM

Landscape mounting directly to the top of the crown.

Dimension H x W: **40 x 23.4 mm**
 Weight: **0.569 kg/m**

	Article No.	SU
130 mm	712-0263	60



Rail 5/40 with EPDM

Portrait mounting directly to the top of the crown

Dimension H x W: **70 x 40 mm**
 Weight: **0.724 kg/m**

	Article No.	SU
395 mm	712-0264	60

Rail 1/22 incl. T-rubber

Portrait mounting with fixing into the sides of the crown, in combination with side plates. Also used with Trapeze-S &-EW



Dimension H x W: **39 x 22.1 mm**
Weight: **0.668 kg/m**

Pallet quantity: **182 Pieces** Article No.

6000 mm **712-0254**

2400 mm **712-0253**

As anti-slip protection for the side fixations a drilling screw can be used, e.g. 806-0309. See next page.

	Article No.	SU
400 mm	712-0252	60

Connector

To connect the rails 1/22



Dimensions H x W x L: **15.9 x 22.2 x 150 mm**

	Article No.	SU
Connector BR 1/22 CS	610-0057	25

Trapeze Fastener

Fixing base rail 1/22 on the sides of the crown



Material: **Aluminium (EN AW 5754)**
Article addition: **Pre-assembled with Alu-fix stripe**

	Article No.	SU
Trapeze fastener side pre-ass.	814-0669	100

Thin Sheet Screw

Fixing used for all our Trapeze rails



Material: **Stainless steel (V2A)**
Drive: **TX30**
Article addition: **Chipless screwing with washer**

	Article No.	SU
JF3-ZT-2-5.5 x 25-E11 / A2	806-0309	100

Module Fastening

For framed & frameless PV modules



Pre-assembled clamps are to be mounted quickly and safely on all base rails of the internal click-system through the patented Clickstone. By universally adjustable clamps, you always have the right clamps for framed and frameless modules in stock.

Example End Clamps



Example Module Mid Clamps



1. Module Mid Clamps

Module Mid Clamps

Fixing modules of different frame heights to the base rails



Incl. small parts (pre-assembled):

1x Stainless steel Allen bolt M6

1x Retainer ring, plastic

Dimensions LxW: **41x40 mm**



Frame height		Colour	Article No.	SU
30-40 mm	Simple clamp	blank	700-0080	40
		black	700-0083	40
	Clamp with bonding clip	blank	700-0102	40
		black	700-0103	40
33-45 mm	Simple clamp	blank	700-0081	40
		black	700-0084	40
	Clamp with bonding clip	blank	700-0104	40
		black	700-0105	40
38-50 mm	Simple clamp	blank	700-0082	40
		black	700-0085	40
	Clamp with bonding clip	blank	700-0106	40
		black	700-0107	40

Universal End Clamp

Fixing modules of different frame heights to the base rails



Incl. small parts (pre-assembled):

1x Stainless steel Allen bolt M6

Dimensions LxW: **35x32.5 mm**



Frame height		Colour	Article No.	SU
30-40 mm		blank	702-0193	10
		black	702-0196	10
33-45 mm		blank	702-0194	10
		black	702-0197	10
38-50 mm		blank	702-0195	10
		black	702-0198	10

Module End Clamp

Fixing modules of one particular frame height to the base rails



Incl. small parts (pre-assembled):

1x Stainless steel Allen bolt M6

Dimensions: L x W: **40 x 33.6 mm**

Frame height	Colour	Article No.	SU
33 mm	blank	702-0246	10
	black	702-0247	10
35 mm	blank	702-0248	10
	black	702-0249	10
38 mm	blank	702-0250	10
	black	702-0251	10
40 mm	blank	702-0252	10
	black	702-0253	10
45 mm	blank	702-0256	10
	black	702-0257	10

2. Laminate Clamps

Material:	Aluminium EN AW 6063 T6 (AlMg0.5Si)
Material screws:	Stainless steel X5CrNi18-10, 1.4301, ASTM 304
Material rubber:	EPDM shore hardness 70 + 5 TPE (thermoplastic elastomer)
Article addition:	Only over the T-head bolt mountable

Laminate Middle Clamp LMC TPE 80 mm for 7 mm



Clamping area W × L:	13.45 × 80 mm = 1076 mm²
Clamping range:	6.5 – 7.5 mm
Clamping distance:	22 mm
Weight:	0.145 kg
Authorized for:	First Solar Serie 4

	Article No.	SU
LMC TPE 7mm; 80mm	700-0149	40

Laminate End Clamp LEC TPE 80 mm for 7 mm



Clamping area W × L:	13.45 × 80 mm = 1076 mm²
Clamping range:	6.5 – 7.5 mm
Clamping distance:	22 mm
Weight:	0.115 kg
Authorized for:	First Solar Serie 4

	Article No.	SU
LEC TPE 7mm; 80mm	702-0380	5

Laminate Middle Clamp LMC EPDM 120 mm for 7 mm



Clamping area W × L:	13.45 × 120 mm = 1614 mm²
Clamping range:	6.5 – 7.5 mm
Clamping distance:	22 mm
Weight:	0.154 kg

	Article No.	SU
LMC 7mm; 120mm	700-0130	40

Laminate End Clamp LEC EPDM 120 mm for 7 mm



Clamping area W × L:	13.45 × 120 mm = 1614 mm²
Clamping range:	6.5 – 7.5 mm
Clamping distance:	22 mm
Weight:	0.129 kg

	Article No.	SU
LEC 7mm; 120mm	702-0318	5

Laminate Middle Clamp LMC TPE 120 mm for 6 mm



Clamping area W × L: **13.45 × 120 mm = 1614 mm²**
Clamping range: **5.5 – 6.5 mm**
Clamping distance: **22 mm**
Weight: **0.154 kg**

Article No. SU

LMC 6mm; 120mm 700-0147 40

Laminate Middle Clamp LEC TPE 120 mm for 6 mm



Clamping area W × L: **13.45 × 120 mm = 1614 mm²**
Clamping range: **5.5 – 6.5 mm**
Clamping distance: **22 mm**
Weight: **0.129 kg**

Article No. SU

LEC 6mm; 120mm 702-0378 5

Laminate Middle Clamp LMC EPDM 200 mm for 7 mm



Clamping area W × L: **13.45 × 200 mm = 2690 mm²**
Clamping range: **6.5 – 7.5 mm**
Clamping distance: **22 mm**
Weight: **0.243 kg**

Article No. SU

LMC 7mm; 200mm 700-0129 40

Laminate Middle Clamp LMC EPDM 200 mm for 7 mm



Clamping area W × L: **13.45 × 200 mm = 2690 mm²**
Clamping range: **6.5 – 7.5 mm**
Clamping distance: **22 mm**
Weight: **0.136 kg**

Article No. SU

LEC 7mm; 200mm 702-0319 5

Laminate Middle Clamp LMC EPDM 80 mm black for 7 mm



Clamping area W × L: **13.45 × 80 mm = 1076 mm²**
Clamping range: **6.5 – 7.5 mm**
Clamping distance: **22 mm**
Weight: **0.145 kg**

Article No. SU

LMC 7mm; 80mm black 700-0255 40

Laminate End Clamp LEC EPDM 80mm Black for 7mm



Clamping area W x L: **13.45 x 80 mm = 1076 mm²**
Clamping range: **6.5 – 7.5 mm**
Clamping distance: **22 mm**
Weight: **0.11 kg**

	Article No.	SU
LEC 7mm; 80mm black	702-0453	5

Roof Fasteners

For Roof Coverings with:

Roof Stones

Roof Tiles

Corrugated Eternit

Trapezoidal Sheet

Corrugated Iron

Standing Seams



1. Aluminium Roof Hooks; pre-assembled

100-7-40



Base plate:	100 × 95 × 40 mm
Holes:	8 × ø 7 mm
Max. height adjustment:	21 mm to rail area
Height:	40 to 51.5 mm in roof batten area
Weight:	0.48 kg

	Article No.	SU
RH Alu 100-7-40; pre-ass.	707-0050	20

100-7-45



Base plate:	100 × 95 × 45 mm
Holes:	8 × ø 7 mm
Max. height adjustment:	21 mm to rail area
Height:	45 to 58 mm in roof batten area
Weight:	0.47 kg

	Article No.	SU
RH Alu 100-7-45; pre-ass.	707-0048	20

100-9-45



Base plate:	100 × 95 × 45 mm
Holes:	8 × ø 9 mm
Max. height adjustment:	21 mm to rail area
Height:	45 to 58 mm in roof batten area
Weight:	0.46 kg

	Article No.	SU
RH Alu 100-9-45; vm	707-0214	20
RH Alu 100-9-45; pre-ass. black	707-0213	20

180-9-40



Base plate:	180 × 110 × 40 mm
Holes:	8 × ø 7 mm
Max. height adjustment:	21 mm to rail area
Height:	45 to 58 mm in roof batten area
Weight:	0.68 kg

	Article No.	SU
RH Alu 180-9-40; pre-ass.	707-0052	20



1. Aluminium Roof Hooks; pre-assembled



Vario2 111-9-40

Base plate:	111 x 110 x 40 mm
Holes:	8 x ø 9 mm
Max. height adjustance:	21 mm to rail area
Height:	40 bis 51.5 mm in roof batten area
Weight:	0.63 kg
Article addition:	with adjustable bracket for vertical and horizontal installation of system support profile

	Article No.	SU
RH Vario2 111-9-40 pre-ass.	707-0053	20



2. Stainless Steel Roof Hooks



170

Mounting on profile roofs

Material Thickness:	5 mm
Total height:	170 mm
Lower leg length:	49 mm vertical
Horizontal leg length:	100 mm
Slot on leg:	38 mm und ø 9 mm
Drilling base plate:	12 x ø 7 mm



In the comfort version are support bracket for the base rails and small parts for the rail connection to the roof hooks pre-assembled.

	Article No.	SU
Roof hook 170 standard	805-0010	20
Roof hook 170 standard, comfort	707-0202	20



Stainless Steel Roof Hook 106 With Twisted Bar

Vertical mounting on profile roofs

Material Thickness:	5 mm
Total height:	155 mm
Lower leg length:	49 mm vertical
Horizontal leg length:	130 mm
Slot on leg:	38 mm und ø 9 mm
Drilling base plate:	12 x ø 7 mm

	Article No.	SU
Roof hook 106 twisted bar	805-0047	20

2. Stainless Steel Roof Hooks

2times Adjustable

Mounting on profile roofs



Material Thickness:	6 mm
Total height:	170 mm
Lower leg length:	40 – 59 mm vertical
Horizontal leg length:	120 mm
Slot on leg:	38 mm und ø 9 mm
Total adjustability:	57 mm
Drilling base plate:	12 x ø 7 mm



In the comfort version are support bracket for the base rails and small parts for the rail connection to the roof hooks pre-assembled.

	Article No.	SU
Roof hook 2times adjustable	805-0071	20
Roof hook 2times adjustable, comfort	707-0201	20

Heavy Loads Roof Hook

Mounting on profile tiles



Material Thickness:	8 mm
Total height:	225 mm
Slot on leg:	30 mm und ø 9 mm
Drilling base plate:	7 x ø 9 mm



In the comfort version are support bracket for the base rails and small parts for the rail connection to the roof hooks pre-assembled.

	Article No.	SU
Heavy loads RH, 8/35	805-0051	20
Heavy loads RH, 8/35, comfort	707-0204	20

Heavy Loads Roof Hook A2

Mounting on profile tiles



Material Thickness:	8 mm
Total height:	205 mm
Slot on leg:	12 mm und ø 9 mm
Drilling base plate:	7 x ø 9 mm

	Article No.	SU
Heavy loads RH 8/35 A2. pre-ass.	707-0032	20

Stainless Steel Roof Hook for Plain Tiles

Mounting on plain tile roofs



Material Thickness:	5 mm
Lower leg length:	33 mm vertical
Horizontal leg length:	200 mm horizontal
Slot on leg:	30 mm and \varnothing 9 mm
Drilling base plate:	2 x \varnothing 7 mm
Weight:	0.501 kg
Weight pre-ass.:	0.663 kg



The pre-assembled variant includes besides the roof hook:
1 bracket 84 x 40 x 7.75 mm, with slot 15 mm and \varnothing 9 mm,
T-head bolt and self-locking nut M8 for connection to the
base rails, pre-assembled

	Article No.	SU
Roof hook for plain tile	805-0018	20
Roof hook for plain tile, pre-ass.	707-0212	20

Stainless Steel Roof Hooks for Slate

Mounting on slate roofs



Material Thickness:	6 mm
Lower leg length:	70 mm vertical
Horizontal leg length:	65 mm horizontal
Slot on leg:	28 mm and \varnothing 9 mm
Drilling baseplate:	3 countersunk holes \varnothing 7 mm
Weight:	0.424 kg
Weight pre-ass.:	0.546 kg



The pre-assembled variant includes besides the roof hook:
1 bracket 84 x 40 x 7.75 mm, with slot 15 mm and \varnothing 9 mm,
T-head bolt and self-locking nut M8 for connection to the
base rails, pre-assembled

	Article No.	SU
Roof hook for slates	805-0007	20
Roof hook for slates, pre-ass.	707-0036	20

3. Shim for Slate Roofs

Shim for Slate Roofs

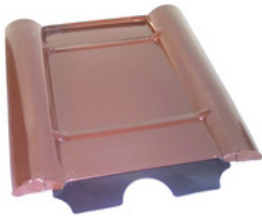
Metal roof panel under roof fixation



	Article No.	SU
Shim galvanized 250 x 380 mm	801-0286	30
Shim black & grey 250 x 380 mm	801-0287	30
Shim galvanized. 250 x 590 mm	801-0288	30

Shim for Profiled Tile Roofs

Metal roof panel under roof fixation



Dimensions L x W: **330 x 420 mm**
Weight: **0.538 kg**

	Article No.	SU
Shim red	801-0359	20

Shim for Plain Tile Roofs

Metal roof panel under roof fixation



Dimensions L x W incl. foam wedge: **180 x 380 mm**
Weight: **0.538 kg**

	Article No.	SU
Shim red	801-0285	30



Stainless Steel Hanger Bolt M10 & M12

Mounted on wood and similar roofs

With EPDM seal and nuts

	Article No.	SU
Hanger bolt M10x200	806-0055	50
Hanger bolt M12x250	806-0074	50
Hanger bolt M12x300	806-0032	50



Solar Fastener

Mounted on metal and similar roofs

With EPDM seal and nuts

	Article No.	SU
JZ3-SB-8.0 x 160/50-FZD	806-0235	1
8.0x125/70 FZD Ø25	806-0501	1
JT3-SB-3-8 x 85/ M10 x 50 FZD	806-0503	1



Bracket for Hanger Bolt

Connecting hanger bolts to the base rail

Dimensions L x W x H:	84 x 54.5 x 38 mm
Material Thickness:	7.75mm
Drill hole in the upper part:	10mm with ø 9 mm
Drill hole in the base:	ø 11/13 mm
Material:	Aluminium (EN AW 6063 T66)

	Article No.	SU
Bracket for hanger bolt M10	601-0124	50
Bracket for hanger bolt M12	601-0125	50

5. Fixation on Standing Seams *



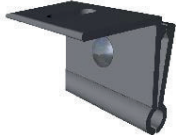
Standing Seam Clamp *

Fixing on standing seam sheeting without drilling

Dimensions L x W: **120 x 60.35 mm**

Weight: **0.629 kg**

	Article No.	SU
Standing seam clamp angled; Stainless steel	805-0080	100



Kalzip Clamp Steel *

Fixing on Kalzip roofs without drilling

Dimensions H x L: **60 x 55 mm**

Weight: **0.146 kg**

	Article No.	SU
Kalzip clamp; short version	805-0032	100



S-5 E-Mini-Clamp *

Fixing on standing seam roofs without drilling

	Article No.	SU
S-5 E-Mini	805-0074	90
S-5 E-Mini-Fl	805-0075	125



S-5 Z-Mini-Clamp *

Fixing for example on Kalzip roofs without drilling

	Article No.	SU
S-5 Z-Mini	805-0076	68
S-5 Z-Mini-Fl	805-0077	68



S5 N-Mini *

Mounting on standing seam roofs without drilling

	Article No.	SU
S5 N-Mini	805-0172	50



With this type of fixation, the roof skin – i.e. the standing seam sheeting and its fixation must be able to withstand all occurring loads. The customer is solely responsible for clearing this issue. Mounting Systems GmbH will not statically verify the suitability of any roof for this type of fixation.



Bracket for Roof Hook

For connections to the roof hooks for plain tiles and slates

Dimensions LxWxH:	84 x 40 x 38 mm
Material Thickness:	7.75 mm
Slot on leg:	27 mm and ø 9 mm
Drill hole in the base:	ø 9 mm
Material:	Aluminium (EN AW 6063 T66)

	Article No.	SU
Bracket for roof hook	601-0115	50



S-5 Screw

Fixing for S-5 Mini clamps

	Artikelnr.	SU
S-5 Screw	806-0529	50



Fixation for Bracket

Fixing the bracket to the roof hooks for plain tiles or slate.

	Article No.	SU
50x Fixation for bracket	720-0041	1



T-head Bolt with Lock Nut

Fastening the base rails to the roof hooks / hanger bolts

Material: Stainless Steel A2

T-head bolt M8x25 mm
Hexagonal locking nut M8

	Article No.	SU
20x Rail fastening with T-head bolt M8	720-1312	1



Omega-Clamp D 8-14mm. black

Used for cable management on the upper channel of the rails

	Article No.	SU
Omega-Clamp D. 8-14mm.black	807-0134	50 & 100

6. Wood Screws



Hexagon 8 mm; Flat head

Fastening heavy load roof hooks to the roof substructure

Galvanized steel A2K

	Article No.	SU
Hexagon wood screw. 8 x 80mm	806-0029	100



Torx 6 mm; Flat head

Fixing the standard roof hook and roof hooks for plain tiles to the roof

Torx-Drive (AW 30)

Stainless steel A2

	Article No.	SU
Chipboard screw 6 x 80mm	806-0072	100



Torx 6 mm; Countersunk head

Fastening slate roof hook to the roof substructure

Torx-Drive (AW 30)

Stainless steel A2

	Article No.	SU
Wood screw 6.0 x 80mm	806-0536	100
Wood screw 6.0 x 100mm	806-0537	100



Cross recess 6 mm; Countersunk head

Fastening slate roof hook to the roof substructure

Stainless steel A2K

	Article No.	SU
Chipboard screw 6 x 100mm	806-0017	100



Product Samples ProLine

Sample box 320x240x115 mm with various loose components

Pitched ProLine
Trapeze ProLine

	Article No.	SU
Product sample loose	720-1653	1

FD3 Premium Line ^{NEW}

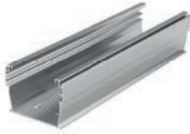
South 10-15°
East-West 10°



1. FD3 Universal Components

Connecting Member

For beginning of each new separated row;
ending of the last row in EW-facing system



Dimensions LxWxH: **250 x 73.6 x 51.6 mm**
Weight: **0.431 kg**
Material: **EN AW-6063 T66**

	Article No.	SU
Connecting member 250mm	600-0365	10

Front Support

To accommodate lower PV module edge; to accommodate rear wind deflector for south-facing system



Dimensions LxWxH: **53 x 89 x 34 mm**
Weight: **0.110 kg**
Material: **Zamak ZP2 - ZP0430**

	Article No.	SU
Front support	814-0703	20

Universal Middle Support

To accommodate upper PV module edge; to accommodate rear wind deflector for south-facing system



Transport Dimensions LxWxH: **395 x 70 x 85 mm (folded position)**
Weight: **1.096 kg**
Material: **Zamak ZP5 - ZP0410**

	Article No.	SU
Support flat roof 10°/15°	711-0260	10

Ball Locking Pin Ø 6 x 50

To lock the Middle Support in desired position (10°/15°).



Dimensions LxWxH: **59.8 x 6 x 6 mm (w/o ring)**
Weight: **0.016 kg**
Material: **1.4301**

	Article No.	SU
Ball locking pin 6x50mm	807-0351	50



End Clamp

To attach the most outer PV module in row to the system

Dimensions LxWxH: **53 x 40 x 61+71 mm**
 Weight: **0.059 kg**
 Material: **EN AW-6063 T6, A2-70**



	Article No.	SU
End clamp 30-40mm	702-0478	20
End clamp 40-50mm	702-0479	20



Middle Clamp

To attach PV modules to the system

Dimensions LxWxH: **34 x 40 x 61+71 mm**
 Weight: **0.031 kg**
 Material: **EN AW-6063 T6, A2-70**



	Article No.	SU
Middle clamp 30-40mm	700-0273	20
Middle clamp 40-50mm	700-0274	20



Ballast Tray

To accomodate desired amount of ballast (e.g. stones, gravel, etc.)

Dimensions WxH: **383 x 55 mm**
 Material: **AW EN 6063 T66**

	Article No.	SU
Ballast tray; 1831mm	801-0373	10
Ballast tray; 2037mm	801-0374	10
Ballast tray; 2171mm	801-0375	10



Rubber pad

Protection for the rails

Length: **250 mm**
 Material: **TPV**

	Article No.	SU
Rubber pad; 250mm	814-0704	20

Base Rail South

To accommodate front and middle supports in south-facing system



Dimensions W x H: **66 x 47.5 mm**
 Weight: **0.695 kg/m**
 Material: **EN AW-6063 T66**

	Article No.	SU
10° Base rail south; 1408mm	600-0372	10
15° Base rail south; 1265mm	600-0376	10

Connecting Profil South

Ending of the last row in south-facing system



Dimensions L x W x H: **585 x 73.6 x 51.6 mm**
 Weight: **0.726 kg**
 Material: **EN AW-6063 T66**

	Article No.	SU
Connecting member south; 585mm	600-0371	10

Connecting Profil South

To connect rows with each other in south-facing system



Dimensions W x H: **73.6 x 51.6 mm**
 Weight: **0.88 kg/m**
 Material: **EN AW-6063 T66**

	Article No.	SU
10° Connecting member; 1025mm	600-0370	10
15° Connecting member; 1293mm	600-0374	10
15° Connecting member; 1475mm	600-0375	10

Rail Cover South

To protect and cover the cables, being routed through the rails



Dimensions W x H: **78.7 x 14.23 mm**
 Weight: **0.388 kg/m**
 Material: **EN AW-6063 T66**

	Article No.	SU
10° Rail cover south; 370mm	600-0373	20
15° Rail cover south; 885mm	600-0377	20
15° Rail cover south; 710mm	600-0378	20



Adapter Wind Deflector

To accommodate wind deflector on middle support in south-facing system

Dimensions LxWxH: **91 x 40 x 39 mm**
 Weight: **0.081 kg**
 Material: **EN AW-6063 T66**

	Article No.	SU
Adapter wind deflector; 40mm	600-0361	20



Screws & Washer

To attach wind deflector to the front and middle support in south-facing system

Material: **A2**

	Article No.	SU
Screw f. metal 5.5x13	806-0520	50
Allen bolt M6x16	806-0340	50
Allen bolt M6x35/24	806-0321	50
Washer M6	807-0315	50



Rear Deflector

To ensure proper south-facing system aerodynamics

Dimensions WxH: **235 x 84 mm**
 Material: **DX 51 + Z 275**

	Article No.	SU
Rear deflector; 1861mm	801-0376	10
Rear deflector; 2066mm	801-0377	10
Rear deflector; 2200mm	801-0378	10



Side Deflector

To ensure proper south-facing system aerodynamics

10° Dimensions LxWxH: **1337 x 39 x 39 mm**
 15° Dimensions LxWxH: **1210.5 x 39 x 39 mm**
 10° Weight: **0.867 kg**
 15° Weight: **1.006 kg**
 Material: **DX 51 + Z 275**

	Article No.	SU
Side deflector 10° Right	801-0370	10
Side deflector 15° Right	801-0372	10
Side deflector 10° Left	801-0369	10
Side deflector 15° Left	801-0371	10

3. FD3-East-West

Base Rail East-West

To accommodate front and middle supports in EW-facing system



Dimensions W x H: **73.6 x 71.6 mm**
 Weight: **1.993 kg**
 Material: **EN AW-6063 T66**

	Article No.	SU
Base rail EW; 2147mm; pre-ass.	600-0368	10
Base rail EW XL; 2287mm; pre-ass.	600-0380	10

Connecting Member East-West

To connect rows with each other in EW-facing system



Dimensions L x W x H: **800 x 73.6 x 71.6 mm**
 Weight: **1.126 kg**
 Material: **EN AW-6063 T66 + TPV**

	Article No.	SU
Connecting member EW; 800mm	600-0366	10

Rail Cover East-West

To protect and cover the cables, being routed through the rails



Dimensions L x W x H: **430 x 78.7 x 14.23 mm**
 Weight: **0.167 kg**
 Material: **EN AW-6063 T66**

	Article No.	SU
Rail cover EW; 430mm	600-0369	20

Side Deflector East-West

To ensure proper EW-facing system aerodynamics

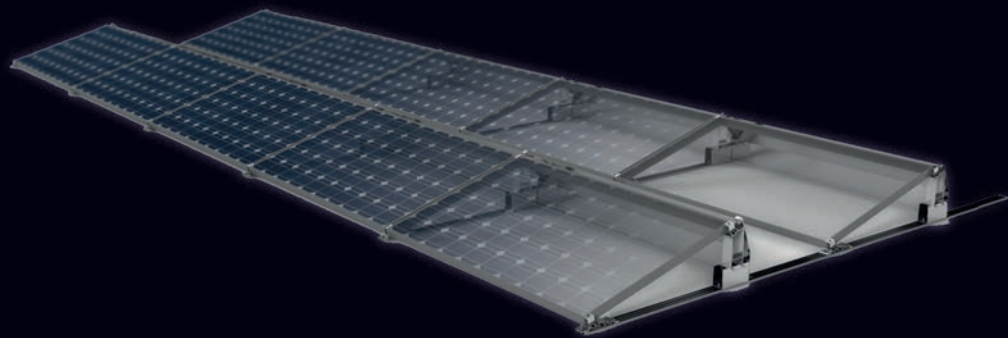
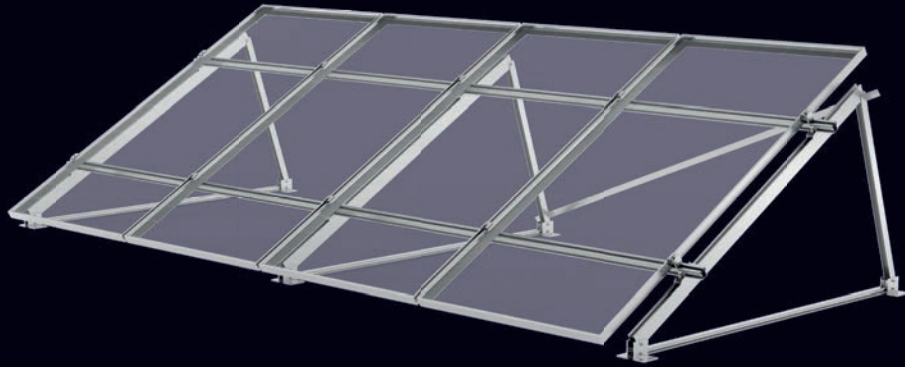


Dimensions W x H: **2135.3 x 27 x 185 mm**
 Weight: **1.263 kg**
 Material: **DX 51 + Z 275**

	Article No.	SU
Side Deflector EW	801-0367	10
Side Deflector EW XL; 2269.8mm	801-0381	10

Elevations

Base Triangles
Low Ballasted System



1. Triangles

Material: Aluminium EN AW 6063 T6 (AlMg0.5Si)



Triangle Vario long

Old Trifix System

	Article No.	SU
Triangle Vario 35-45° long	711-0138	1
Triangle Vario 20-30° long	711-0139	1
Triangle Vario 10-15° long	711-0140	1



Dreieck Vario kurz

Old Trifix System

	Article No.	SU
Triangle Vario 35-45° short	711-0158	1
Triangle Vario 20-30° short	711-0159	1
Triangle Vario 10-15° short	711-0160	1



2. Triangles & Accessories

Material: Aluminium EN AW 6063 T6 (AlMg0.5Si)



Base Triangles 10°-45°

Article addition: Pre-assembled; manually adjustable in 5° steps;
Without cross rail connector

	Article No.	SU
Base triangle; 1200 mm	711-0258	1
Base triangle; 1700 mm	711-0259	1



Diagonals

Article addition: Pre-assembled; manually adjustable in 5° steps;
Without cross rail connector

Base triangle 1200 mm	Article No.	SU
Diagonals 10°; 242 mm	600-0337	1
Diagonals 15°; 343 mm	600-0338	1
Diagonals 20°; 445 mm	600-0339	1
Diagonals 25°; 547 mm	600-0340	1
Diagonals 30°; 648 mm	600-0341	1
Diagonals 35°; 748 mm	600-0342	1
Diagonals 40°; 846 mm	600-0343	1
Diagonals 45°; 943 mm	600-0344	1
Base triangle 1700 mm	Article No.	SU
Diagonals 10°; 327 mm	600-0345	1
Diagonals 15°; 473 mm	600-0346	1
Diagonals 20°; 618 mm	600-0347	1
Diagonals 25°; 763 mm	600-0348	1
Diagonals 30°; 906 mm	600-0349	1
Diagonals 35°; 1048 mm	600-0350	1
Diagonals 40°; 1188 mm	600-0351	1
Diagonals 45°; 1325 mm	600-0352	1



2. Triangles & Accessories

Material: Aluminium EN AW 6063 T6 (AlMg0.5Si)



Triangle 15°

Article addition: Without cross rail connector

Variant 2 portrait/3 landscape: 3310mm
Variant 3 portrait/4 landscape: 4970mm

	Article No.	SU
Triangle 15° for 2 portrait/4 landscape	711-0271	1
Triangle 15° for 3 portrait	711-0272	1



Strut Triangle 30x3

Dimensions W x H x L: 30 x 3 x 1895 mm
Weight: 0.46 kg

	Article No.	SU
Strut triangles 30 x 3	612-0629	10
Drilling screw 4.2 x 16 mm	806-0012	100



Cross Rail Connector Outer Click

Fixation of the top rail layer on triangles

	Article No.	SU
Cross rail connector OCII Galvanized Screw	706-0202	20



Metal Wall Plug

To secure the triangles in concrete substructures

	Article No.	SU
Metall wall plug M10 x 110	807-0111	50



Sheetrail for Ballast

Accommodation for ballast

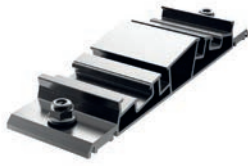
Dimensions W x H: 91.3 x 25 mm
Weight: 3.829 kg
Article addition: without fastener

	Article No.	SU
3000mm	800-1272	4

3. Low ballasted system

Front Foot

Front foot as well as connector of the ground rails, pre-assembled, Black side shows the 15° degree



Material: Aluminium (EN AW 6063 T66), Stainless steel

	Article No.	SU
Front foot 10°/ 15°, pre-ass.	711-0152	10

Central Support for East-West

2 variants depending on the inclination angle, pre-assembled



Material: Aluminium (EN AW 6063 T66), Stainless steel

	Article No.	SU
Central support 10°, pre-ass.	711-0156	10
Central support 15°, pre-ass.	711-0157	10

Ground Rails for East-West

Construction under the supports & conjunction of system



Material: Aluminium (EN AW 6063 T66)
 Dimensions W x H: 66 x 10.7 mm
 Weight: 0.419 kg/m

		Article No.	SU
60mm	Begin & end	610-0743	20
410mm	Row spacing	610-0744	20
1915mm	10° & 15°	610-0751	10

Back Support for South

2 variants depending on the inclination angle, pre-assembled



Material: Aluminium (EN AW 6063 T66), Stainless steel

	Article No.	SU
Back support 10°, pre-ass.	711-0253	10
Back support 15°, pre-ass.	711-0251	10

3. Low ballasted system



Ground Rails for South

Construction under the supports & conjunction of system

Material: Aluminium (EN AW 6063 T66).
Stainless steel (V2A/1.4301)

Dimensions W x H: 66 x 10.7 mm

Weight: 0.419 kg/m

		Article No.	SU
60mm	Begin	610-0743	20
1360mm	End	610-0747	10
1450mm	10°	610-0746	10
1710mm	15°	610-0748	10



Back Sheet for South

Material: Galvanized steel

Length: 1.704m for modules till 1.65m length
2.023m for modules till 2.00m length
2.300m for modules till 2.00m length

		Article No.	SU
Sheet 237 mm 10°; 0.6mm; 1.704 m		801-0357	10
Sheet 237 mm 10°; 0.6mm; 2.023 m		801-0358	10
Sheet 237 mm 10°; 0.6mm; 2.300 m		801-0382	10
Sheet 323 mm 15°; 0.6mm; 1.704 m		801-0354	10
Sheet 323 mm 15°; 0.6mm; 2.023 m		801-0356	10
Sheet 323 mm 15°; 0.6mm; 2.300 m		801-0383	10



Clamping Claw

For fixation of the back sheet to the ground rail

Material: Aluminium (EN AW 6063 T66)
Stainless steel (V2A/1.4301)

		Article No.	SU
Clamping claw, pre-assembled		711-0155	20

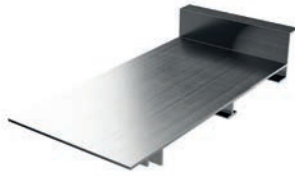


Back Sheet Clamp

For fixation of the back sheet on top of the support

Material: Aluminium (EN AW 6063 T66)
Stainless steel (V2A/1.4301)

		Article No.	SU
Back sheet clamp, pre-ass.		711-0252	20



Additional Ballast Profile

Ballast profile for additional ballast stones

Optimized for stone plates 300×300×40 mm

Material: Aluminium (EN AW 6063 T66)
 Dimensions W × H: 164 × 30 mm
 Weight: 0.935 kg/m

	Article No.	SU
Ballast profile 80 mm	610-0830	20



Additional Ballast Bracket

Ballast profile for additional ballast whole modules length

Material: Aluminium (EN AW 6063 T66)
 Dimensions W × H: 50 × 40 mm
 Material thickness: 3 mm
 Weight: 0.706 kg/m

	Article No.	SU
Ballast bracket; 1.74 m	601-0202	10
Ballast bracket; 1.77 m	601-0209	10
Ballast bracket; 1.82 m	601-0213	10
Ballast bracket; 2,03 m	601-0205	10
Ballast bracket; 2,05 m	601-0208	10
Ballast bracket; 2,20 m	601-0214	10



T-Head Bolt & Locking Nut

For fixing L-bracket and ballast profile to ground rail

Material: Stainless steel (V2A/1.4301)

	Article No.	SU
Hexagon locking nut M8	807-0164	20
T-head bolt M8×20	806-0313	20



Building Protection Mat

Layer for the protection of the roof surface

Cut to 370×150×8 mm with fixation flaps

Draw from the data sheet of the roof surface,
 which type of building protection mat is suitable

	Article No.	SU
Building protection mat standard	814-0566	50
Building protection mat foiled	814-0560	50

Module Support Clamp Flat Roof PLUS



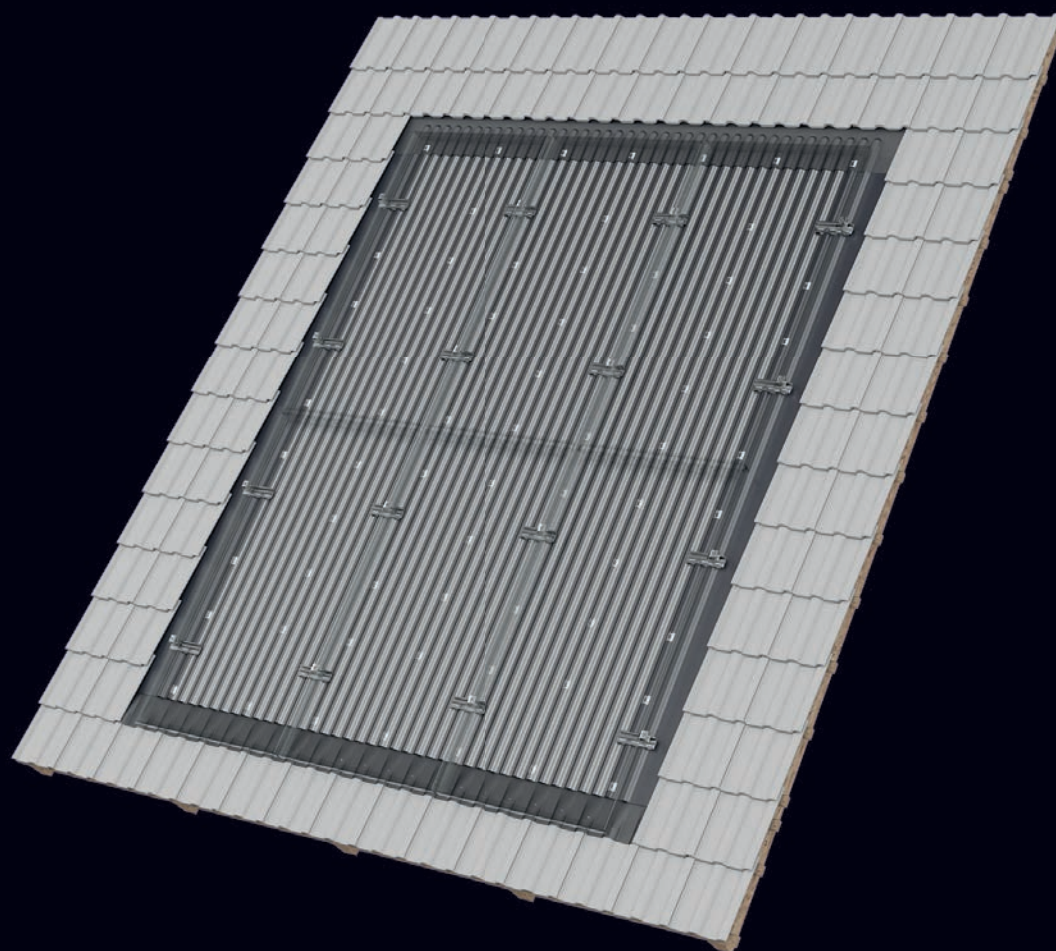
For the fixation of a top rail layer on the supports
for clamping on the modules

Material: **Aluminium (EN AW 6063 T66)**
 Stainless steel (V2A/1.4301)

	Article No.	SU
Module support clamp 60mm	711-0129	20

In-Roof

Adapter
Sheets
Accessories





1. Adapter

Material: Aluminium (EN AW 6063 T66)

Short Adapter for Landscape Installation

For landscape installation of the module



Dimensions W x H x L: **161 x 29 x 100 mm**
Weight: **0.178 kg**

	Article No.	SU
Short adapter for landscape installation, with EPDM	712-0257	10

Long Adapter for Landscape Installation

For landscape installation of the module



Dimensions W x H x L: **161 x 29 x 390 mm**
Weight: **0.673 kg**

	Article No.	SU
Long adapter for landscape installation, with EPDM	712-0258	10

Adapter for Portrait Installation

For portrait installation of the module



Dimensions W x H x L: **56 x 40 x 210 mm**
Weight: **0.301 kg**

	Article No.	SU
Adapter for portrait installation, with EPDM	712-0256	10

2. Sheets

Material: Aluminium (EN AW 3005)



Corrugated Metal Sheets

Type of corrugation 18/76

Dimensions L x W x H:

1067 x 1500 x 0.8 mm

Weight:

4.21 kg/Pieces

	Article No.	SU
1067 x 1500 x 0.8mm	801-0031	1



Top Flashing

For a smooth transition between the top module field and the roof covering



	Article No.	SU
Top flashing, 969mm	801-0054	1
Top flashing, 969mm, black	801-0360	1



Corner Flashing

For a smooth transition between the corner of the module field and the roof covering



	Article No.	SU
Corner flashing, left	801-0048	1
Corner flashing, left, black	801-0362	1
Corner flashing, right	801-0049	1
Corner flashing, right, black	801-0363	1



Lateral Flashing

For a smooth transition between the module field and the roof covering on either side

	Article No.	SU
Lateral flashing, 2m	801-0047	1
Lateral flashing, 2m, black	801-0361	1

3. Small Parts



Sheet Metal Screw JT3-2 – 6.5×65mm E16/2.0

Fixing adapters to the roof

With drill bit

	Article No.	SU
JT3-2 - 6.5×65mm E16/2.0	806-0175	100



Roofing Screw 4.5×45mm with 15mm Washer A2

Fixing corrugated metal sheets and lateral flashings to the roof
(in connection with calottes or fixing clip)

Without drill bit

	Article No.	SU
Roofing screw 4.5×45mm with 15mm washer A2	806-0208	100



Fixing Clip

Fixing the upper and lateral flashings

For the fixation of the fixing clip, 1 roofing screw 4.5×45mm is necessary

	Article No.	SU
Fixing clip	814-0002	50

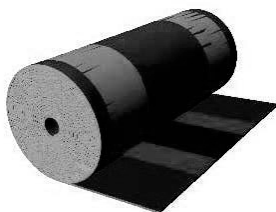


Calotte

Additional fixing points of the corrugated metal sheets

For the fixation of the calotte, 1 roofing screw 4.5×45mm is necessary

	Article No.	SU
Calotte	807-0112	100



MetallRoll

Ensuring a watertight transition between module field and the tiles below

2 adhesive strips (Butyl strip)

Pleated strips of aluminum, color coated with acrylic paint

	Article No.	m per roll
MetallRoll, 320mm, red	814-0309	10,00
MetallRoll, 320mm, black	814-0316	10,00



Profile Filler

Lining the lower edge of the corrugated metal sheet

	Article No.	SU
Profile filler 1067 mm	814-0048	1



Tree-Foam Profile Filler

Lining the upper tiles – optional

	Article No.	SU
Tree-foam profile filler 795 mm	809-0050	1



Triangular Foam Filler

Lining the tiles adjoining the module field – optional

Self-adhesive

	Article No.	SU
Adhesive seal 1000mm, taper height 60mm	814-0310	1



Butyl Strip

Additional sealing for vertical overlaps of the flashings – optional

	Article No.	SU
Butyl strip 20×1.5×500mm, black	814-0323	1



Double-Sided Adhesive Tape

	Article No.	m per roll
Double-sided adhesive tape, 15 mm	809-0053	5,00



Mounting Aid

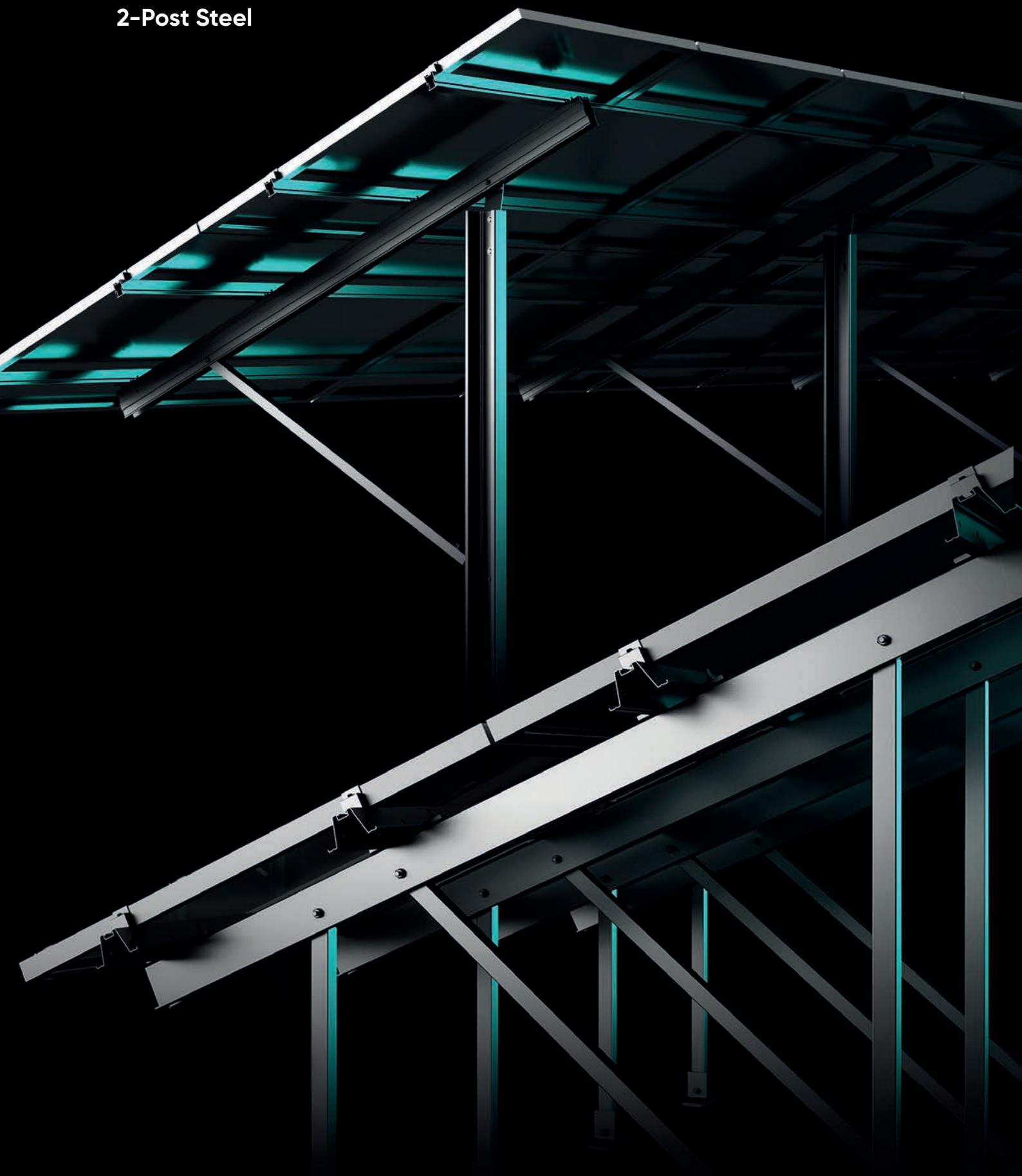
Facilitating the installation of the corrugated metal sheets

	Article No.	SU
Mounting aid	814-0043	10

Ground Mount

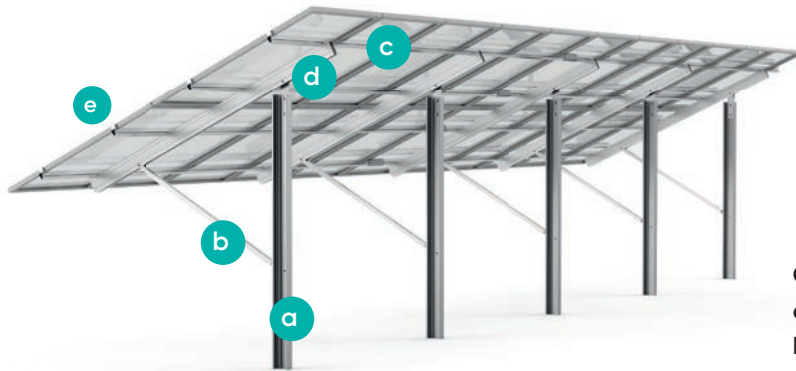
1-Post

2-Post Steel





Open Terrain 1-Post System



2 Row System 1-Post, Portrait

Components

- a Ramming posts
- b Fixing plates
- c Module support
- d Rafter
- e Module (end) clamp

Configuration	Modules	Foundation	Clamping
1-Post	Framed Modules	Ramming posts	Clickstone-System
2 hochkant		In-Cast	

C-Posts

For foundation with ramming post as well as In-Cast



Material: **Steel S355**
 Weight: **23.23kg**

	Article No.	SU
C-Post 150 x 70 x 14.3 x 3.5mm; 1-Post; 2.8m	814-0696	1

Rafter



Material: **Aluminium (EN AW 6063 T66)**
 Weight: **6.83kg**

	Article No.	SU
Rafter 150 x 53.4mm CS; 1-Post; 2.7m	616-0365	1

Adapter Rafter

Fixation between post and rafter with 2 adapters each



Material: **Stainless steel (V2A/1.4301)**

	Article No.	SU
Adapter Rafter	814-0533	1



Strut

Support of the front part of rafter

Material: Aluminium (EN AW 6063 T66)
Dimensions W x H: 40 x 60 mm
Weight: 1.406 kg/m

	Article No.	SU
Diagonals; 20° 1-Post; 1.356m	616-0366	1
Diagonals; 30° 1-Post; 1.254m	616-0367	1



Adapter Strut

Fixation between post and strut

Material: Aluminium (EN AW 6063 T66)

	Article No.	SU
Adapter Diagonals	616-0225	1



Module Support

Material: Aluminium (EN AW 6063 T66)
Dimensions W x H: 50 x 65 mm
Weight: 1.378 kg/m

	Article No.	SU
Module support 28/65 CS + TH; 5.15 m	800-0094	4
Module support 28/65 CS + TH; 3.15 m	800-0095	4



Connection Box 28/65

Connection Set with 4 connectors incl. screws

Material: Stainless steel (V2A/1.4301)

	Article No.	SU
Connection Box 28/65	720-1602	4



Module support clamp Open Terrain

Fixation of module supports on rafter

Material: Aluminium (EN AW 6063 T66)
Stainless Steel (V2A/1.4301)

	Article No.	SU
Module support clamp	717-0034	20



Fixation Box 1-Post

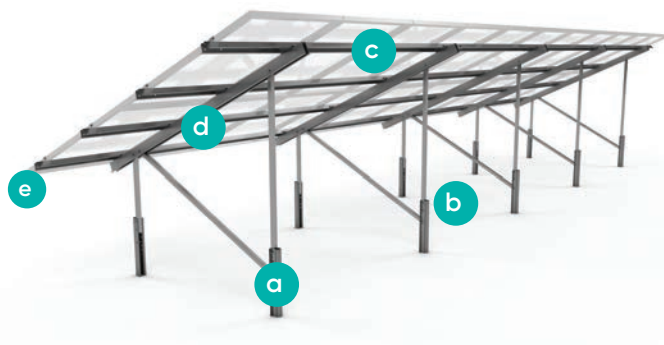
Set with all small parts for one rafter unit

Material: Stainless steel (V2A/1.4301)

	Article No.	SU
Fixation Box 1-Post	720-1603	1



Open Terrain 2-Post Steel System



2 Row System 2-Post, Portrait and Landscape

Components

- a Ramming posts
- b Fixing plates
- c Module support
- d Rafter
- e Module (end) clamp

Configuration	Modules	Foundation	Clamping
2-Post	Framed Modules	Ramming posts	Clickstone-system
4 Landscape		In-cast/ In-Cast Foot plates	

Leg



Material: **S350 GD + ZM 310 MA**
 Dimensions W x H: **40 x 40 mm**
 Weight: **1.813 kg/m**



	Article No.	SU
Leg front 0.77m	821-0002	1
Leg back 1.608m	821-0003	1
Leg back 2.029m	821-0004	1
Leg back 1.425m	821-0011	1
Leg back 1.753m	821-0012	1

Rafters



Material: **S350 GD + ZM 310 MA**
 Dimensions W x H: **83 x 100 mm**
 Weight: **3.843 kg/m**

	Article No.	SU
Rafters 2.80m	821-0006	1
Rafters 3.20m	821-0007	1
Rafters 4.30m	821-0008	1



Module Support

Material: **S350 GD + ZM 310 MA**
 Dimensions W x H: **112.7 x 60 mm**
 Weight: **2.942 kg/m**

	Article No.	SU
Module support 6.20m	821-0009	1
Module support 3.10m	821-0010	1



Module Support Clamp

Material: **S350 GD + ZM 310 MA**
 Dimensions W x H: **40 x 12 mm**

	Article No.	SU
Module support clamp	814-0658	1



Inter-Module Clamp

Incl. small parts (pre-assembled):
 1 stainless steel hexagon socket screw M6
 1 O-ring, polymer

	Article No.	SU
Module clamp 30-38 mm	700-0139	50
Module clamp 39-50 mm	700-0140	50
Module clamp 30-38 mm + Bonding Clip	700-0143	50
Module clamp 39-50 mm + Bonding Clip	700-0144	50



Module-End Clamp for Steel

Incl. small parts (pre-assembled):
 1 Stainless steel hexagon socket screw M6



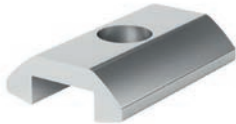
	Article No.	SU
Universeller module-end clamp 30-40 mm	702-0476	10
Module-end clamp 31 mm	702-0299	30
Module-end clamp 32 mm	702-0473	30
Module-end clamp 33 mm	702-0300	30
Module-end clamp 35 mm	702-0301	30
Module-end clamp 38 mm	702-0302	30
Module-end clamp 40 mm	702-0303	30
Module-end clamp 42 mm	702-0304	30
Module-end clamp 45 mm	702-0305	30
Module-end clamp 46 mm	702-0306	30
Module-end clamp 50 mm	702-0307	30



Connector

Material: **S350 GD + ZM 310 MA**
Dimensions W x H: **67 x 45 mm**
Weight: **1.24 kg/Pieces**

	Article No.	SU
Connector 0.40m	821-0013	1



Rocker Stone

Material: **Aluminium (EW AM 6063 T66)**

	Article No.	SU
Rocker Stone 30 mm	616-0252	100
Rocker Stone 175 mm	616-0253	50



Foot Plate

For the foundation with concrete foundations

Material: **Aluminium (EW AM 6063 T66)**
Height: **103 mm**
Weight: **8.336 kg/m**

	Article No.	SU
Foot Plate 160x139 mm	616-0370	1
Foot Plate 160x60 mm; 1 drill hole	616-0369	1



Bracing AlMg Fl

Material: **Aluminium (EW AM 6063 T66)**
Dimensions W x H: **3 x 30 mm**
Weight: **0.243 kg/m**

	Article No.	SU
AlMg Fl 3.40m	800-1357	1
AlMg Fl 3.60m	800-1358	1



Cap Profile 2.00m

Material: **Steel S355**
Dimensions W x H: **48 x 80.5 mm**
Weight: **5.322 kg/m**

	Article No.	SU
Cap profile 2.00m	821-0001	1



Hammerhead

Material: **Stainless steel (1.4301/ V2A)**

	Article No.	SU
Hammerhead M8x40	806-0351	100



Hex Screw M10

Material: **Steel; DIN933; Zinc-Lamella coating**

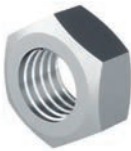
	Article No.	SU
Hex screw M10x65	806-0382	100
Hex screw M10x70	806-0506	100
Hex screw M10x25	806-0469	100



Washer

Material: **Steel/Zinc-Lamella coating**

	Article No.	SU
M8 Washer	807-0026	100
M10 Washer	807-0192	400



Hex Nut

	Article No.	SU
Hex nut M8; Stainless steel	807-0165	100
Hex nut M10; Steel/Zinc-Lamella	807-0191	200



Fixed Anchor M12x110

Material: **Stainless steel (1.4401/A4)**
 Dimensions L x W x H: **110 x 19 x 19mm**
 Weight: **0.115kg**

	Article No.	SU
Fixed anchor M12x110, 2-Post foot plate	807-0195	6



Drainage Plate

Dimensions L x W x H: **40 x 40 x 2mm**

	Article No.	SU
Drainage plate	814-0577	200

Solarcarports

E-Port Home





E-Port Home Single

Stand-alone carport for the installation of up to 10 solar modules

Colour:	Black
Dimensions parking space L x W x H:	4240 x 2920 x 2230 mm
Dimensions total L x W x H:	6080 x 4235 x 2994 mm
Article addition:	Includes all supports, angles, small parts, trapezoidal sheet metal and drainage gutters

	Article No.	SU
Base E-Port Home Single; landscape	821-0100	1

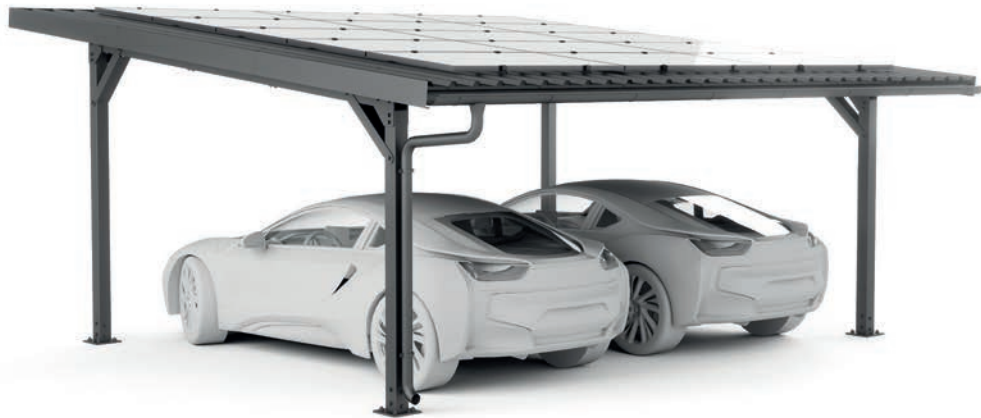
Module Assembly Set Single

Set includes all parts for mounting solar modules on the roof of an E-Port Home Single



24 x	Rail 1/16 for Landscape
24 x	Rail 5/40 for Portrait
96 x	Thin sheet metal screw
16 x	Module clamp
8 x	Module end-clamp

	Article No.	SU
Basic Trapeze-Kit E-Port Home Single/Double, portrait, 33-45mm	720-1831	1
Basic Trapeze-Kit E-Port Home Single/Double, portrait, 30-40mm	720-1833	1
Trapeze roof kit E-Port-Home Single, landscape modules 33-45mm	720-1747	1
Trapeze roof kit E-Port-Home Single, landscape modules 30-40mm	720-1829	1



E-Port Home Double

Stand-alone carport for the installation of up to 15 solar modules

Colour:	Black
Dimensions parking space L x W x H:	4240 x 5380 x 2132 mm
Dimensions total L x W x H:	6080 x 6345 x 2998 mm
Article addition:	Includes all supports, angles, small parts, trapezoidal sheet metal and drainage gutters

	Article No.	SU
Base set E-Port Home Double; landscape	821-0101	1

Module Assembly Set Double

Set includes all parts for mounting solar modules on the roof of an E-Port Home Double



36 x	Rail 1/16 for Landscape
36 x	Rail 5/40 for Portrait
144 x	Thin sheet metal screw
24 x	Module clamp
12 x	Module end-clamp

	Article No.	SU
Basic Trapeze-Kit E-Port Home Single/Double, portrait, 33-45mm	720-1831	1
Extension Trapeze-Kit E-Port Home Double, portrait, 33-45mm	720-1832	1
Basic Trapeze-Kit E-Port Home Single/Double, portrait, 30-40mm	720-1833	1
Extension Trapez-Kit E-Port Home Double, portrait, 30-40mm	720-1834	1
Trapeze Roof Kit E-Port-Home Double, landscape modules 30-40mm	720-1830	1



**mounting
systems**

Office Rangsdorf
(Headquarters & Production)

Mounting Systems GmbH
Mittenwalder Straße 9a
D-15834 Rangsdorf, Germany
www.mounting-systems.com

Tel: +49 33708 529 - 100
Fax: +49 33708 529 - 199
Mail: info-de@mounting-systems.com

Office Cologne
(Sales Office)

Mounting Systems GmbH
Rolshover Straße 524
D-51105 Cologne, Germany
www.mounting-systems.com

Tel: +49 221 29277 - 600
Fax: +49 221 29277 - 629
Mail: info-de@mounting-systems.com