

## O/1-10V RF + Push Dimmer

Model No.: L1

RF dimming/O-10V or 1-10V/AC relay output/AC Push-Dim/Wall junction box mounting



CE RoHS LVD

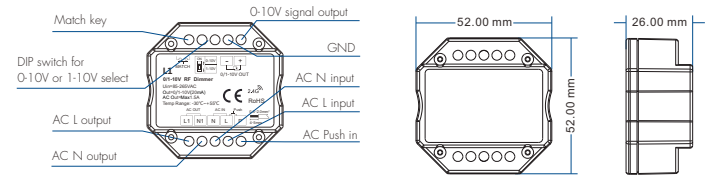
### Features

- O/1-10V RF or AC push dimmer, 1 channel output.
- Output 1 channel O/1-10V signal, connect with O/1-10V dimmable driver.
- High voltage AC input, High voltage AC relay output.
- O-10V or 1-10V output selectable by DIP switch.
- 256 levels O-100% dimming smoothly without any flash.
- Compatibility with Skydance's 2.4G single zone or multiple zone dimming remote control.
- Connect with external push switch to achieve on/off and O-100% dimming function.
- Easy to be placed in standard wall junction box behind a push switch.

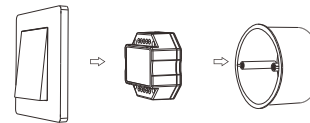
### Technical Parameters

Input and Output		Dimming data	
Input voltage	AC85-265V	Input signal	RF 2.4GHz + Push Dim
Output voltage	AC85-265V	RF Control distance	30m(Barrier-free space)
Output signal	O/1-10V (20mA)	Dimming level	256 levels
Output current	Max 1.5A (AC)	Dimming range	0-100%
Safety and EMC		Environment	
EMC standard (EMC)	EN 55015:2013	Operation temperature	Ta: -30°C ~ +55°C
	EN 61547:2009	Case temperature (Max.)	Tc: +85°C
	EN 61000-3-2:2014	IP rating	IP20
	EN 61000-3-3:2013		
Safety standard (LVD)	EN 61347-2-11:2002		
	EN 61347-1:2015		
	EN 62493:2015		
Certification	CE, EMC, LVD	Warranty	
		Warranty	5 years

### Mechanical Structures and Installations

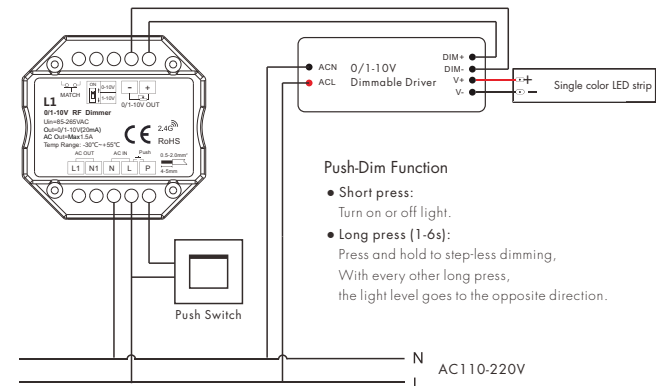


### Typical Wall Junction Box Mounting

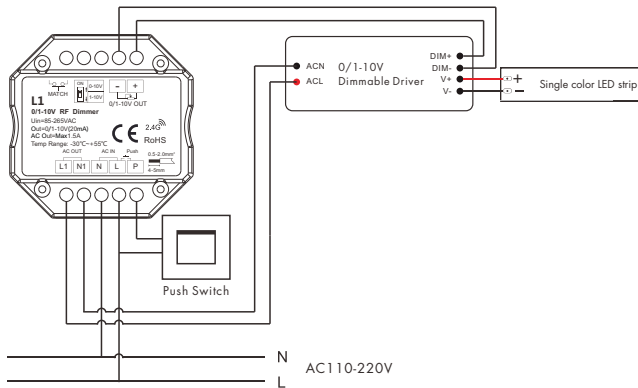


### Wiring diagram

- Connect with O/1-10V dimming driver (no use AC OUT)

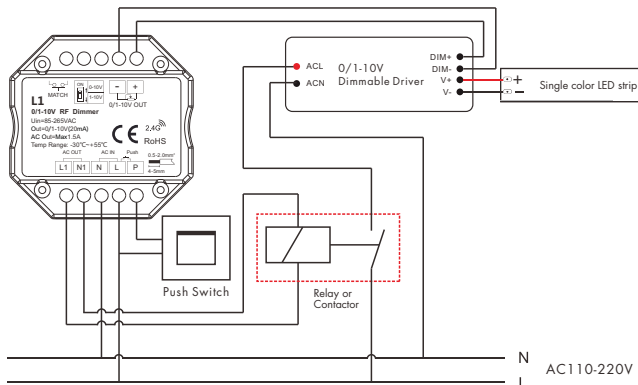


• Connect with 0/1-10V dimming driver (use AC OUT)



• Connect with 0/1-10V dimming driver (use AC OUT and relay or contactor)

An additional AC relay or contactor is needed when total input current of the load is higher than 1.5A or inrush current is greater than 15A.



**Note:** We recommend the number of LED drivers connected to 0/1-10V dimmer does not exceed 5 pieces, The maximum length of the wires from dimmer to LED driver should be no more than 15 meters.

## 0-10V or 1-10V dimming setting

Select 0-10V dimmer or 1-10V dimmer according to dimmable LED driver.



## Match Remote Control (two match ways)

End user can choose the suitable match/delete ways. Two options are offered for selection:

### Use the controller's Match key

**Match:**

Short press match key, immediately press on/off key (single zone remote) or zone key (multiple zone remote) of the remote.

**Delete:**

Press and hold match key for 5s to delete all match, The light blinks 5 times means all matched remotes were deleted.

### Use Power Restart

**Match:**

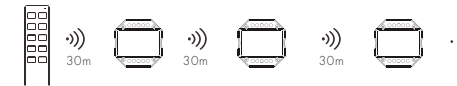
Switch off the power, then switch on power again, immediately short press on/off key (single zone remote) or zone key (multiple zone remote) 3 times on the remote. The light blinks 3 times means match is successful.

**Delete:**

Switch off the power, then switch on power again, immediately short press on/off key (single zone remote) or zone key (multiple zone remote) 5 times on the remote. The light blinks 5 times means all matched remotes were deleted.

## Application notes

### 1. All the receivers in the same zone.



RF remote

**Auto-transmitting:** One receiver can transmit the signals from the remote to another receiver within 30m, as long as there is a receiver within 30m, the remote control distance can be limitless.

**Auto-synchronization:** Multiple receivers within 30m distance can work synchronously when they are controlled by the same remote.

Receiver placement may offer up to 30m communication distance. Metals and other metal materials will reduce the range. Strong signal sources such as WiFi routers and microwave ovens will affect the range.

We recommend for indoor applications that receiver placements should be no further apart than 15m.

### 2. Each receiver(one or more) in a different zone, like zone 1, 2, 3 or 4.

