

Specification

Tonning series-D8140NWW



General description

- ※ Three-wire adjustable toning strip makes it widely match all kinds of controllers
- ※ Self-encapsulated design offers six optional 2300-6000K white lights
- ※ With life span over 36000H
- ※ Ta: -25~40° C; Tc: 75° C (max)



Dimensions

Max.length: 5000mm

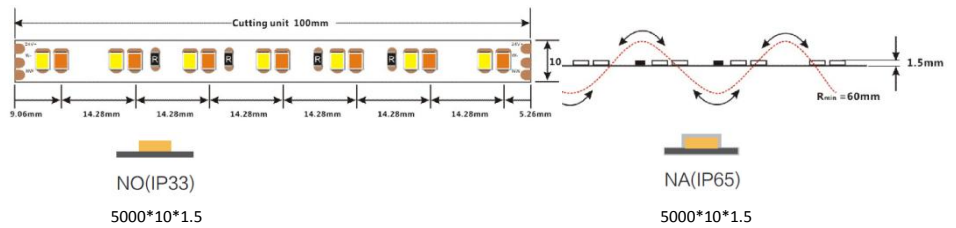
Cutting unit: 100mm/14leds

LED pitch: 14.28mm

Min. bend diameter: Φ 60mm

Mounting: 3M tape

IP: IP33



Electronic & output data

Input voltage: 24VDC

Rated current: 0.713A(1meter) /3.2A(5meter)

Typical Power: 17.1W(1meter) /76.8W(5meter)

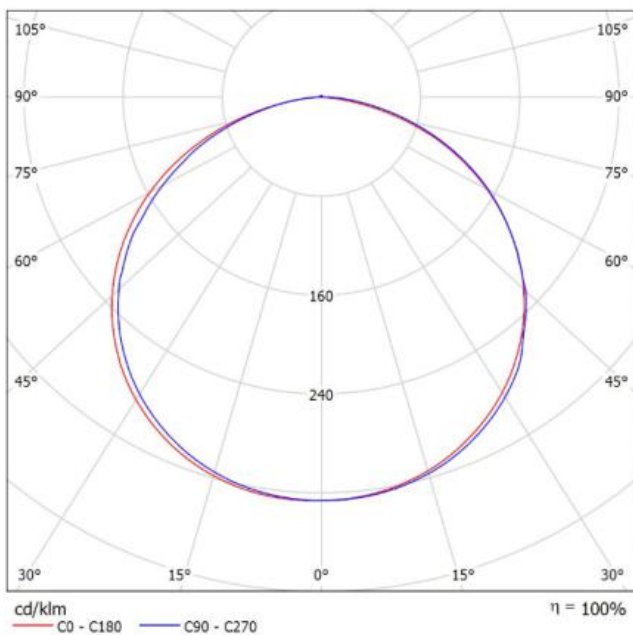
Power range: 15.5~18.6W(for both colors)

Max.power: 19.2W (If=20mA)

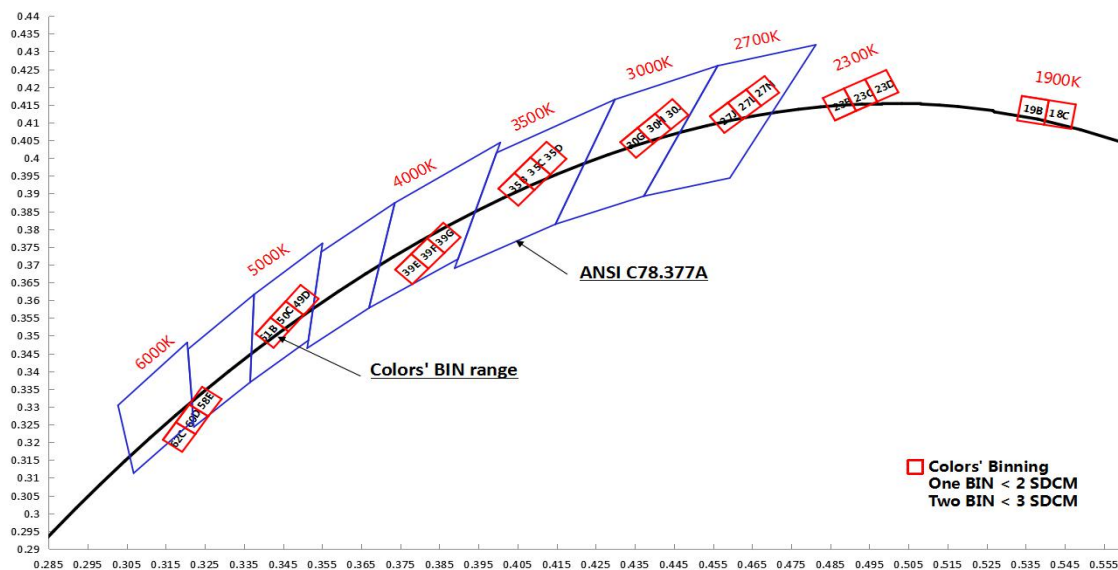
CRI: 80/95

On-off times: 10000 (test times)

Color	SWW
CCT	2700K+6000K
Lumen	1900
Lm/W	111
Energy efficiency class	A+
1.The tolerance of output data can be vary up to 10% 2.the output data tested according to IES LM-79-08 3.the output data is based on IP33/1merter 4.IP protection process leads changes to size, CCT and luminous flux	



1m	157.7, 626.01x	334.18cm
2m	39.42, 156.51x	668.35cm
3m	17.52, 69.561x	1002.53cm
5m	6.306, 25.041x	1670.88cm
7m	3.218, 12.781x	2339.23cm
Height	Eavg, Emax	Angle: 118.20deg
		Diameter

BIN

Accessories Information

Type	Name	Picture	Code	Color	protection technique	Remark
wire cable with connector	white and black and yellow cable		94.31.30181201 (head) /94.31.30181202 (tail)	white/black/yellow	NO	18AWG L=120mm
	single pin,"-"shape wire connector		94.51.110000003	black	-	Wire Diamerer < 2.1mm
	single pin,"T"shape wire connector		94.51.110000005	black	-	Wire Diamerer < 2.1mm
	double pin,"-"shape wire connector		94.51.110000004	black	-	Wire Diamerer < 2.1mm
	double pin,"T"shape wire connector		94.51.110000006	black	-	Wire Diamerer < 2.1mm
	Split-box		94.51.110000001	-	-	-
	Quick wiring		94.51.110000002	-	-	-
Fixed parts	Solder free terminal		94.42.621040001	transparent	NO	-
	Solder free terminal		94.42.621040002	transparent	NO	-
	10mm Tube clamps		94.19.011000004	transparent	NO	-

Order Code Formats

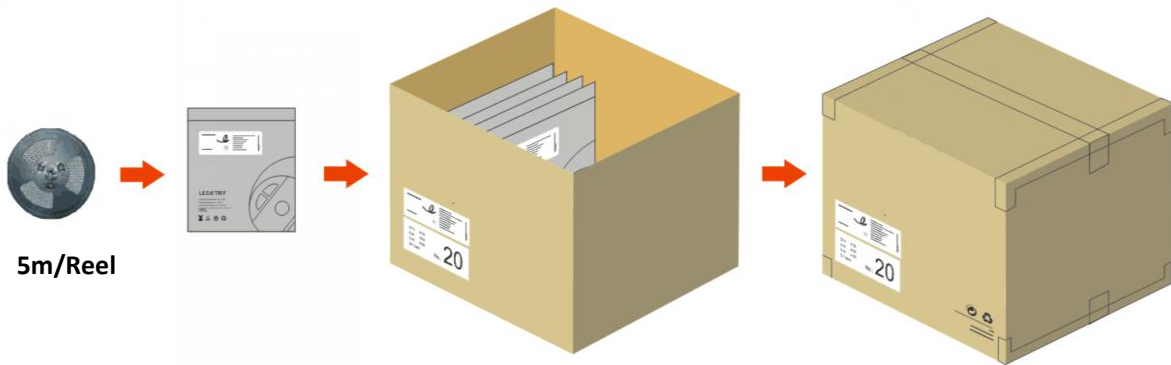
1:Category		2:LED		3:LED/m		4:Voltage		5:FPC Width		6:IP Process		7:CRI		8:CCT	
D	-	8	2835	140	140 LED	24	24V	10	10mm	NO	NO	8	>80	SWW	2700K+6000K
										NA	NANO				

9:Silk Printing		10: Entry cable		11:Wire type		12:Wire length		13:Tape type		14:Label Type		15: Strip Length	
C	COLORS	S	Single	A	red and black cable	012	12cm	W	White 3M	C	COLORS	0050	0.5m
S	customized	D	doubel	B	SM-male wire	020	20cm	Y	Yellow 3M	S	customized	0100	1m
N	Neutral	X	Nothing	C	SM-female wire	050	50cm	R	Red tape			0200	2m
				X	Nothing	100	100cm	X	Nothing			0500	5m
						000	Nothing					5000	50m

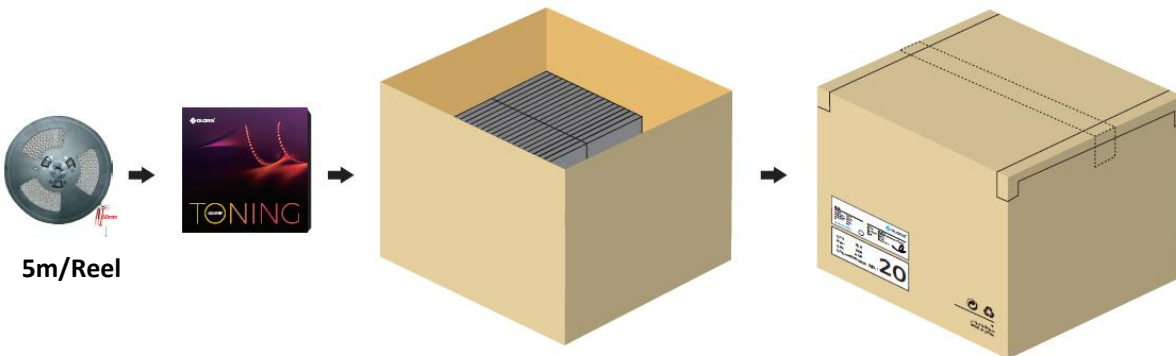
D81402410NO-8SWWCA012WC0500

Packing

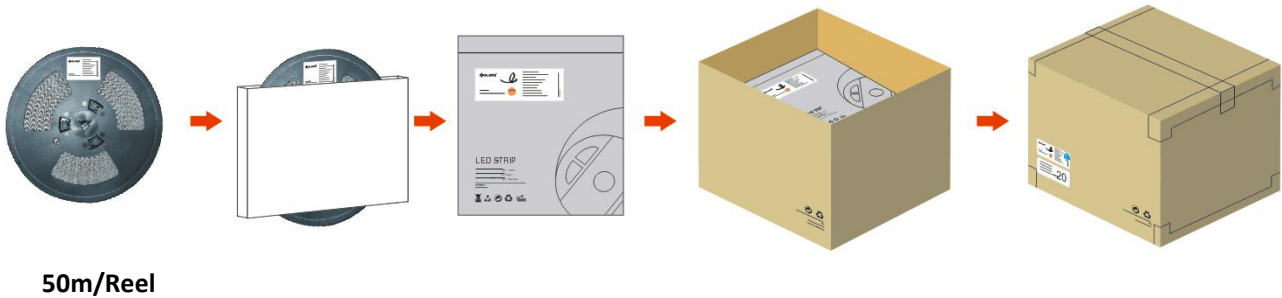
1. Non- brand of NO(IP33)/NA(IP65).



2. Brand of NO(IP33)/NA(IP65).



3. Engineering packaging of NO(IP33).



Disclaimer

- ※ Please drive the led strip with 24VDC isolated power, and the ripple of the constant voltage source should be less than 5%.
- ※ Please do not bend the strip into an arc with a diameter less than 60mm to ensure the longevity and reliability.
- ※ Do not fold it in case any damage of LED beads.
- ※ Do not pull the power wire hard to ensure the longevity. Any Crash may damage the LED light is prohibited.
- ※ Please make sure the wire is connected to the anode and cathode correctly. The power output should be consistent with the voltage of the strip to avoid damage.
- ※ LED lights should be stored in dry, sealed environment. Please only unpack it before usage. Ambient temperature: $-20\text{ }^{\circ}\text{C} \sim +40\text{ }^{\circ}\text{C}$. Storage temperature: $-0\text{ }^{\circ}\text{C} \sim +60\text{ }^{\circ}\text{C}$. Please use the strips without waterproof within indoor environment with humidity less than 70%.
- ※ Please be careful during operation. Do not touch the AC power supply in case of electric shock.
- ※ Please leave at least 20% power for the power supply during using to ensure there is enough power supply to drive the product.
- ※ Do not use any acid or alkaline adhesives to fix the product (e.g.: glass cement).

